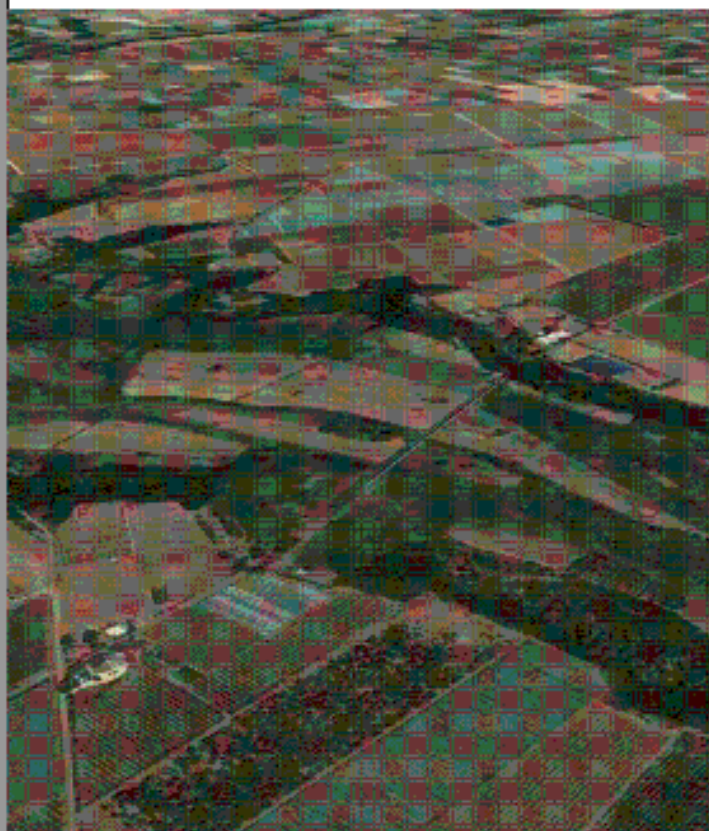


CONSORZIO DI BONIFICA STORNARA E TARA

viale Magna Grecia, 240 - 74121 TARANTO

PROGETTO DI FATTIBILITA' TECNICO-ECONOMICA DI RIPRISTINO DEL
"PONTE TUBO DELL'IMPIANTO IRRIGUO CONSORTILE SX BRADANO
UBICATO IN ATTRAVERSAMENTO NELLA LAMA DI LATERZA"
NEL COMUNE DI CASTELLANETA (TA)
CIG ZE320C0FE5



Capogruppo R.T.P.
ing. Francesco LASIGNA
via del Mercato, 40/E - 74011 CASTELLANETA

Mandatari R.T.P.
ing. Giuseppe CARLUCCI
via lago di Molveno, 7 - 74121 TARANTO
dott. geol. Antonio TRAMONTE
via Vittorio Veneto, 134 - 74016 MASSAFRA

R.U.P. Consorzio di Bonifica
ing. Santo CALASSO

ELABORATO	DATA	SCALA	ALLEGATO
<i>Relazione geotecnica e sulle fondazioni</i>	07/2018	varie	R.10

AGGIORNAMENTO	DATA	DESCRIZIONE

DATI GEOTECNICI E DI STRUTTURA:

Distribuzione punti maglia Coordinate punti maglia.

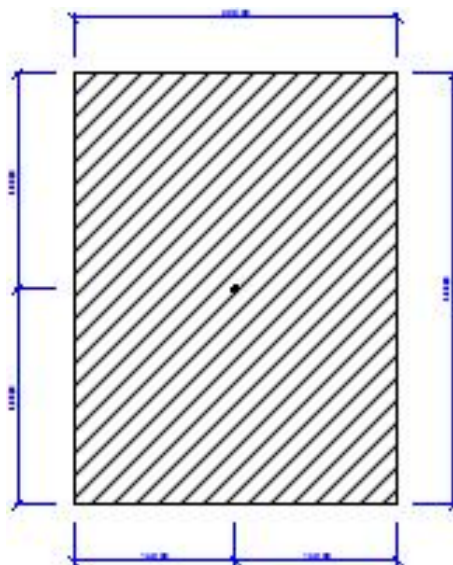
Punto maglia	X (cm)	Y (cm)	Z (cm)	Nome plinto
1	2563.00	0.00	-365.50	P01
2	5126.00	0.00	-547.90	P02
3	7689.00	0.00	-545.40	P03
4	10252.00	0.00	-572.80	P04
5	12815.00	0.00	-610.30	P05
6	15378.00	0.00	-522.70	P06
7	17941.00	0.00	-565.20	P07
8	20504.00	0.00	-572.60	P08
9	23067.00	0.00	-585.10	P09
10	25630.00	0.00	-582.50	P10
11	28193.00	0.00	-510.00	P11
12	30756.00	0.00	-592.40	P12
13	33319.00	0.00	-549.90	P13
14	35882.00	0.00	-517.30	P14
15	38445.00	0.00	-414.80	P15

Tipologie strutturali utilizzate Pianta generale



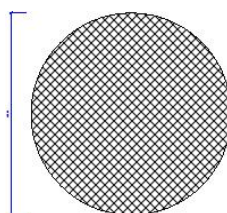
Tipologie Plinti

Elenco delle tipologie Plinti creati ed utilizzati in pianta
Plinti Rettangolari
Dimensioni = 400 cm x 300 cm x 120 cm, Volume = 14.4 mc, Peso = 36000 daN
Magrone: tipo STABILIZZATO
Dimensioni: spessore = 50 cm, fuoriuscita = 50 cm
Quota sollecitazioni assegnata = sopra al plinto, attacco pilastro/plinto



Tipologie Pilastri

Elenco delle tipologie Pilastri creati ed utilizzati in pianta
Pilastri Circolari
Dimensioni r = 60 cm



Parametri di verifica

Coefficienti proprietà terreno:

- Coesione = 1
- Angolo di attrito = 1
- Resistenza al taglio non drenata = 1

Coefficienti resistenze fondazione:

- Capacità portante (SLU) = 2.3
- Scorrimento (SLU) = 1.1
- Capacità portante (SLV) = 1.8
- Scorrimento (SLV) = 1.1

Materiali

- Calcestruzzo in Opera:

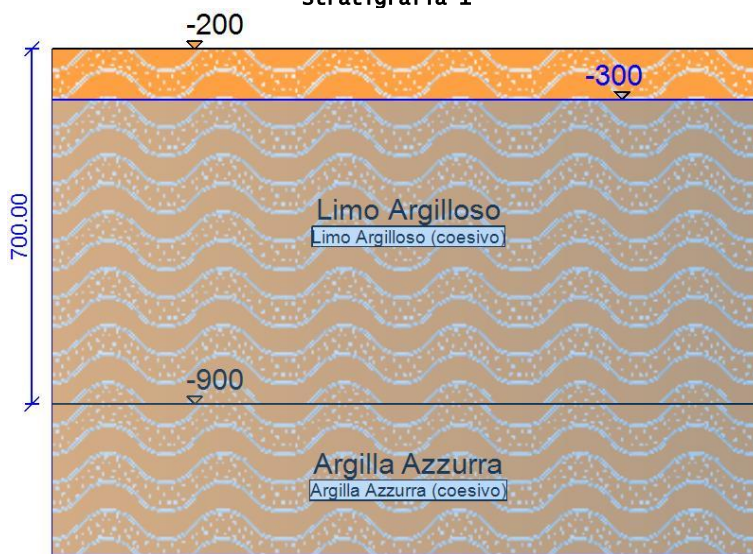
- fck = 100 daN/cm²
- Descrizione = C12/15
- Alpha termica = 1E-05
- Gamma (p,sp) = 0.0025 daN/cm²
- Gamma c = 1.5
- fcd = 56.7 daN/cm²
- alpha cc = 0.85
- epsilon c2 = 0.2000 %
- epsilon cu2 = 0.3500 %

- Acciaio:

- Tipo = FeB44k
- E = 2000000 daN/cm²
- fyk = 3900 daN/cm²
- ftk = 3900 daN/cm²
- epsilon yd = 0.1696 %
- epsilon ud = 6.7500 %
- Gamma s = 1.15
- fyd = 3 391.304 daN/cm²
- fud = 3 391.304 daN/cm²

Stratigrafie terreno

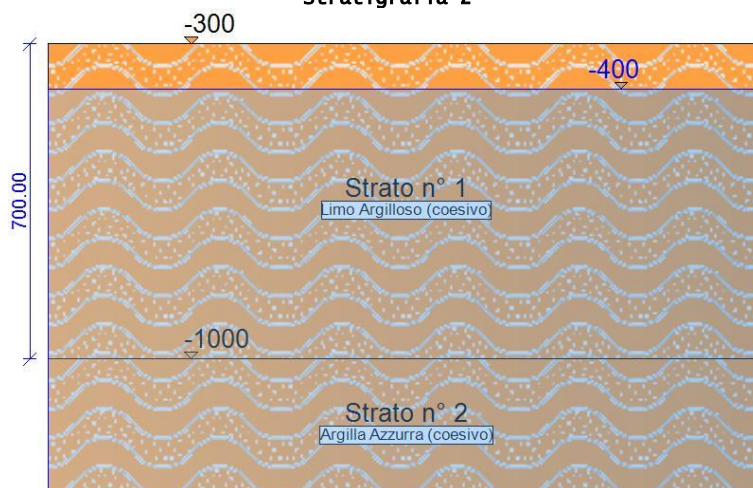
Stratigrafia 1



Strato	quota iniziale (cm)	Descrizione strato	Terreno
Strato 1	-200.00	Limo Argilloso	Limo Argilloso (coesivo)
Strato 2	-900.00	Argilla Azzurra	Argilla Azzurra (coesivo)

Quota falda = -300 cm.
 Plinti agenti: 1, 15
 Prova SPT associata = LL-200

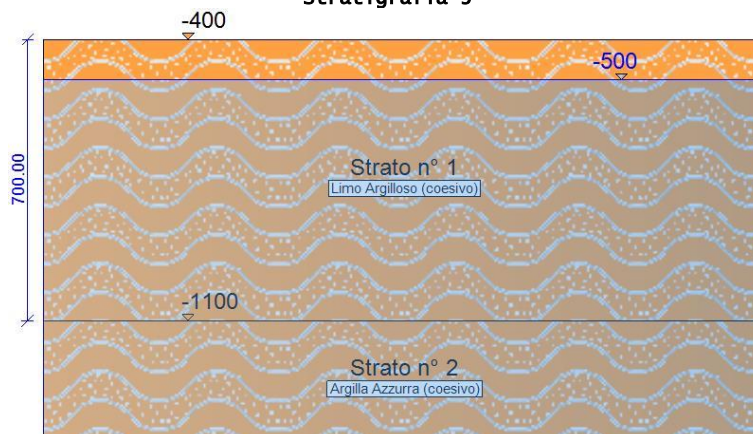
Stratigrafia 2



Strato	quota iniziale (cm)	Descrizione strato	Terreno
Strato 1	-300.00	Limo Argilloso	Limo Argilloso (coesivo)
Strato 2	-1000.00	Argilla Azzurra	Argilla Azzurra (coesivo)

Quota falda = -400 cm.
 Plinti agenti: 11, 15
 Prova SPT associata = LL-300

Stratigrafia 3



Strato	quota iniziale (cm)	Descrizione strato	Terreno
Strato 1	-400.00	Limo Argilloso	Limo Argilloso (coesivo)
Strato 2	-1100.00	Argilla Azzurra	Argilla Azzurra (coesivo)

Quota falda = -500 cm.
 Plinti agenti: 2, 3, 4, 5, 6, 7, 8, 9, 10, 12, 13
 Prova SPT associata = LL-400

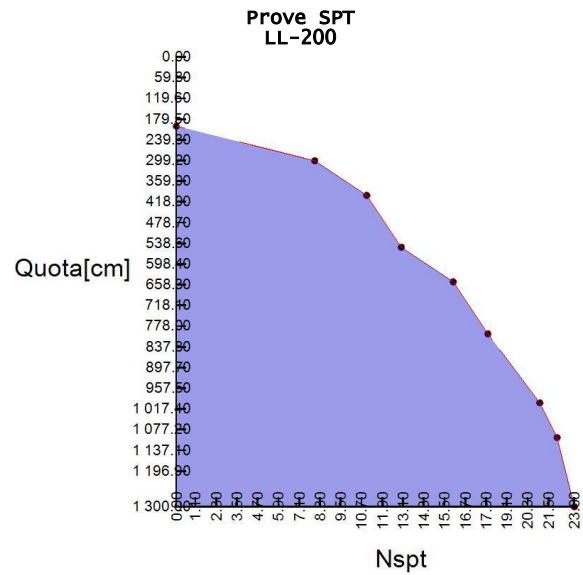
Caratteristiche dei terreni

- Limo Argilloso (coesivo)

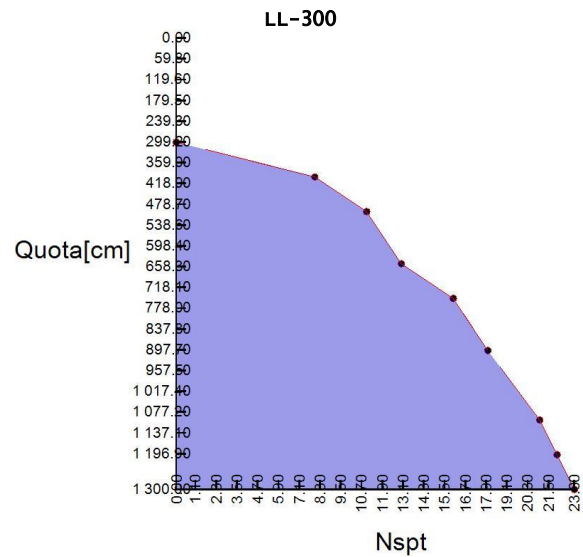
Coesione	= 1.5 daN/cm ²
Angolo di attrito	= 22°
Peso di volume secco	= 0.00155 daN/cm ³
Peso di volume saturo	= 0.00202 daN/cm ³
Resistenza al taglio non drenata	= 1 daN/cm ²
Modulo di taglio del terreno	= 200 daN/cm ²
Coeff. di Poisson	= 0.45
vel. onde di taglio	= 397 m/s

- Argilla Azzurra (coesivo):

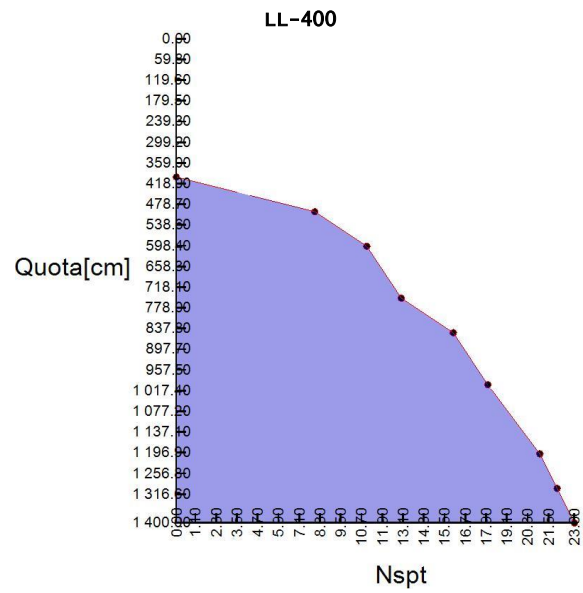
Coesione	= 3 daN/cm ²
Angolo di attrito	= 24°
Peso di volume secco	= 0.0019 daN/cm ³
Peso di volume saturo	= 0.0022 daN/cm ³
Resistenza al taglio non drenata	= 2.5 daN/cm ²
Modulo di taglio del terreno	= 200 daN/cm ²
coeff. di Poisson	= 0.48
vel. onde di taglio	= 440 m/s



Punti	Quota (cm)	Nspt (n. colpi)
1	-200.00	0
2	-300.00	8
3	-400.00	11
4	-550.00	13
5	-650.00	16
6	-800.00	18
7	-1000.00	21
8	-1100.00	22
9	-1300.00	23



Punti	Quota (cm)	Nspt (n. colpi)
1	-300.00	0
2	-400.00	8
3	-500.00	11
4	-650.00	13
5	-800.00	16
6	-900.00	18
7	-1100.00	21
8	-1200.00	22
9	-1300.00	23



Punti	Quota (cm)	Nspt (n. colpi)
1	-400.00	0
2	-500.00	8
3	-600.00	11
4	-750.00	13
5	-850.00	16
6	-1000.00	18
7	-1200.00	21
8	-1300.00	22
9	-1400.00	23

RISULTATI ANALISI STATO DI FATTO (NON SISMICA):

c.port. [fs]	scorr. [fs]	cedim. [cm]	σ mgr. [daN/cm ²]	σ ter. [daN/cm ²]
6 (0.85) ●	6 (2.24)	9 (3.529)	12 (-5.85)	12 (-5.14)
8 (0.87) ●	2 (2.26)	8 (3.525)	10 (-5.76)	10 (-5.06)
2 (0.87) ●	8 (2.27)	10 (3.510)	8 (-5.70)	8 (-5.01)
10 (0.87) ●	10 (2.27)	7 (3.490)	4 (-5.63)	4 (-4.95)
12 (0.87) ●	4 (2.27)	4 (3.486)	14 (-5.58)	14 (-4.91)
4 (0.88) ●	12 (2.28)	13 (3.451)	2 (-5.44)	2 (-4.79)
14 (0.94) ●	14 (2.35)	2 (3.439)	6 (-5.32)	6 (-4.68)
3 (1.28)	1 (100.00)	3 (3.433)	5 (-3.07)	5 (-2.74)
13 (1.29)	3 (100.00)	6 (3.397)	9 (-3.05)	9 (-2.72)
7 (1.29)	5 (100.00)	1 (3.385)	11 (-3.04)	11 (-2.72)
9 (1.31)	7 (100.00)	12 (3.156)	15 (-3.03)	15 (-2.70)
1 (1.33)	9 (100.00)	5 (2.726)	7 (-3.00)	7 (-2.68)
5 (1.34)	11 (100.00)	14 (2.713)	13 (-2.93)	13 (-2.62)
11 (1.36)	13 (100.00)	11 (2.699)	3 (-2.91)	3 (-2.60)
15 (1.37)	15 (100.00)	15 (2.677)	1 (-2.90)	1 (-2.59)

Riassunto verifiche plinti (parte 1)

R.pli. [fs]	R.mgr. [fs]	Fles. [fs]	Tagl. [fs]	Punz. [fs]	Bicc. [fs]
7 (> 100)	7 (> 100)	12 (0.84) ●	12 (1.72)	8 (42.21)	1 (- - -)
9 (> 100)	9 (> 100)	10 (0.85) ●	10 (1.74)	9 (42.41)	2 (- - -)
6 (> 100)	6 (> 100)	8 (0.86) ●	8 (1.76)	7 (42.54)	3 (- - -)
2 (> 100)	2 (> 100)	4 (0.87) ●	4 (1.78)	12 (42.56)	4 (- - -)
4 (> 100)	4 (> 100)	14 (0.89) ●	14 (1.83)	5 (42.59)	5 (- - -)
10 (> 100)	10 (> 100)	2 (0.89) ●	2 (1.83)	10 (42.64)	6 (- - -)
8 (> 100)	8 (> 100)	6 (0.90) ●	6 (1.85)	4 (42.77)	7 (- - -)
12 (> 100)	12 (> 100)	9 (1.52)	9 (3.53)	13 (42.80)	8 (- - -)
14 (> 100)	14 (> 100)	7 (1.53)	7 (3.54)	2 (42.93)	9 (- - -)
15 (> 100)	15 (> 100)	5 (1.53)	5 (3.55)	14 (42.93)	10 (- - -)
1 (> 100)	1 (> 100)	13 (1.54)	13 (3.56)	3 (42.96)	11 (- - -)
3 (> 100)	3 (> 100)	3 (1.54)	3 (3.58)	6 (43.01)	12 (- - -)
11 (> 100)	11 (> 100)	11 (1.55)	11 (3.58)	11 (43.04)	13 (- - -)
13 (> 100)	13 (> 100)	15 (1.56)	15 (3.62)	15 (43.50)	14 (- - -)
5 (> 100)	5 (> 100)	1 (1.58)	1 (3.66)	1 (43.97)	15 (- - -)

Riassunto verifiche plinti (parte 2)

Casi di carico

Caso 1

Descrizione: SLU

Coefficiente moltiplicatore: Peso Proprio Plinti, Magrone, Rinterro = 1.3

Punto maglia	sestetto	N (daN)	Mx (daNxcM)	My (daNxcM)	Tx (daN)	Ty (daN)
1	1	289822	0	0	0	0
2	1	296853	0	235	0	0
3	1	296622	0	0	0	0
4	1	297955	0	235	0	0
5	1	299195	0	0	0	0
6	1	296301	0	235	0	0
7	1	299524	0	146700	0	0
8	1	301923	0	235	0	0
9	1	300443	0	-146700	0	0
10	1	298874	0	235	0	0
11	1	296070	0	0	0	0
12	1	299426	0	235	0	0
13	1	297724	0	0	0	0
14	1	296853	0	235	0	0
15	1	292946	0	0	0	0

Caso 2

Descrizione: SLU VENTOY

Coefficiente moltiplicatore: Peso Proprio Plinti, Magrone, Rinterro = 1.3

Punto maglia	sestetto	N (daN)	Mx (daNxcM)	My (daNxcM)	Tx (daN)	Ty (daN)
1	1	289822	-373	0	0	0
1	2	289822	373	0	0	0
2	1	296853	-16034315	235	0	34263
2	2	296853	16034315	235	0	-34263
3	1	296622	-821	0	0	0
3	2	296622	821	0	0	0
4	1	297955	-17062117	235	0	34263
4	2	297955	17062117	235	0	-34263
5	1	299195	-801	0	0	0
5	2	299195	801	0	0	0
6	1	296301	-15520412	235	0	34263
6	2	296301	15520412	235	0	-34263
7	1	299524	-815	146700	0	0
7	2	299524	815	146700	0	0
8	1	301923	-17404716	235	0	34263
8	2	301923	17404716	235	0	-34263
9	1	300443	-920	-146700	0	0
9	2	300443	920	-146700	0	0
10	1	298874	-17918615	235	0	34263
10	2	298874	17918615	235	0	-34263
11	1	296070	-967	0	0	0
11	2	296070	967	0	0	0
12	1	299426	-18432512	235	0	34263
12	2	299426	18432512	235	0	-34263
13	1	297724	-885	0	0	0
13	2	297724	885	0	0	0
14	1	296853	-16034315	235	0	34263
14	2	296853	16034315	235	0	-34263
15	1	292946	-377	0	0	0
15	2	292946	377	0	0	0

Caso 3
Descrizione: Rara

Punto maglia	sestetto	N (daN)	Mx (daNxcM)	My (daNxcM)	Tx (daN)	Ty (daN)
1	1	208772	0	0	0	0
2	1	214180	0	181	0	0
3	1	214002	0	0	0	0
4	1	215028	0	181	0	0
5	1	215982	0	0	0	0
6	1	213756	0	181	0	0
7	1	216051	0	97800	0	0
8	1	217711	0	181	0	0
9	1	216758	0	-97800	0	0
10	1	215735	0	181	0	0
11	1	213578	0	0	0	0
12	1	216159	0	181	0	0
13	1	214851	0	0	0	0
14	1	214180	0	181	0	0
15	1	211175	0	0	0	0

Caso 4
Descrizione: Rara VentoY

Punto maglia	sestetto	N (daN)	Mx (daNxcM)	My (daNxcM)	Tx (daN)	Ty (daN)
1	1	208772	-248	0	0	0
1	2	208772	248	0	0	0
2	1	214180	-10689543	181	0	22842
2	2	214180	10689543	181	0	-22842
3	1	214002	-547	0	0	0
3	2	214002	547	0	0	0
4	1	215028	-11374745	181	0	22842
4	2	215028	11374745	181	0	-22842
5	1	215982	-534	0	0	0
5	2	215982	534	0	0	0
6	1	213756	-10346941	181	0	22842
6	2	213756	10346941	181	0	-22842
7	1	216051	-543	97800	0	0
7	2	216051	543	97800	0	0
8	1	217711	-11603144	181	0	22842
8	2	217711	11603144	181	0	-22842
9	1	216758	-613	-97800	0	0
9	2	216758	613	-97800	0	0
10	1	215735	-11945743	181	0	22842
10	2	215735	11945743	181	0	-22842
11	1	213578	-645	0	0	0
11	2	213578	645	0	0	0
12	1	216159	-12288341	181	0	22842
12	2	216159	12288341	181	0	-22842
13	1	214851	-590	0	0	0
13	2	214851	590	0	0	0
14	1	214180	-10689543	181	0	22842
14	2	214180	10689543	181	0	-22842
15	1	211175	-252	0	0	0
15	2	211175	252	0	0	0

Caso 5
Descrizione: Frequente

Punto maglia	sestetto	N (daN)	Mx (daNxcM)	My (daNxcM)	Tx (daN)	Ty (daN)
1	1	199059	0	0	0	0

2	1	204468	0	181	0	0
3	1	204290	0	0	0	0
4	1	205316	0	181	0	0
5	1	206269	0	0	0	0
6	1	204044	0	181	0	0
7	1	205498	0	29340	0	0
8	1	206319	0	181	0	0
9	1	206205	0	-29340	0	0
10	1	206023	0	181	0	0
11	1	203866	0	0	0	0
12	1	206447	0	181	0	0
13	1	205138	0	0	0	0
14	1	204468	0	181	0	0
15	1	201463	0	0	0	0

Caso 6
Descrizione: Quasi Permanente

Punto maglia	sestetto	N (daN)	Mx (daNxcM)	My (daNxcM)	Tx (daN)	Ty (daN)
1	1	186394	0	0	0	0
2	1	191803	0	181	0	0
3	1	191625	0	0	0	0
4	1	192651	0	181	0	0
5	1	193604	0	0	0	0
6	1	191379	0	181	0	0
7	1	192473	0	0	0	0
8	1	192934	0	181	0	0
9	1	193180	0	0	0	0
10	1	193358	0	181	0	0
11	1	191201	0	0	0	0
12	1	193782	0	181	0	0
13	1	192473	0	0	0	0
14	1	191803	0	181	0	0
15	1	188798	0	0	0	0

Caso 7
Descrizione: SLUEqu

Punto maglia	sestetto	N (daN)	Mx (daNxcM)	My (daNxcM)	Tx (daN)	Ty (daN)
1	1	254818	0	0	0	0
2	1	260226	0	181	0	0
3	1	260049	0	0	0	0
4	1	261075	0	181	0	0
5	1	262028	0	0	0	0
6	1	259802	0	181	0	0
7	1	262697	0	146700	0	0
8	1	264957	0	181	0	0
9	1	263404	0	-146700	0	0
10	1	261781	0	181	0	0
11	1	259625	0	0	0	0
12	1	262206	0	181	0	0
13	1	260897	0	0	0	0
14	1	260226	0	181	0	0
15	1	257221	0	0	0	0

Stabilità a ribaltamento

Punto maglia	caso-sestetto	M stab. (daNxcM)	M rib. (daNxcM)	FS plinto	caso-sestetto	M stab. (daNxcM)	M rib. (daNxcM)	FS plinto + magrone
1	7-1	44 918 574	0	>100	7-1	47 913 145	0	>100
2	7-1	45 229 443	181	>100	7-1	48 244 739	181	>100
3	7-1	45 130 109	0	>100	7-1	48 138 783	0	>100
4	7-1	46 066 640	181	>100	7-1	49 137 749	181	>100
5	7-1	47 277 432	0	>100	7-1	50 429 260	0	>100
6	7-1	44 447 349	181	>100	7-1	47 410 506	181	>100
7	7-1	46 091 907	146 700	>100	7-1	49 164 701	146 700	>100
8	7-1	46 643 375	181	>100	7-1	49 752 933	181	>100
9	7-1	46 765 338	146 700	>100	7-1	49 883 028	146 700	>100
10	7-1	46 449 274	181	>100	7-1	49 545 892	181	>100
11	7-1	46 908 419	0	>100	7-1	50 035 647	0	>100
12	7-1	46 795 174	181	>100	7-1	49 914 852	181	>100
13	7-1	45 385 714	0	>100	7-1	48 411 428	0	>100
14	7-1	47 208 255	181	>100	7-1	50 355 472	181	>100
15	7-1	62 246 408	0	>100	7-1	65 358 728	0	>100

Massime pressioni sul terreno

Punto maglia	Stratig.	caso-sestetto	Area ridotta (mq)	q massima (daN/cm ²)
1	1	2-1	3.20 × 4.20 = 13.4	2.6
2	3	2-1	3.03 × 3.20 = 9.7	3.6
3	3	2-1	3.20 × 4.20 = 13.4	2.6
4	3	2-1	3.00 × 3.20 = 9.6	3.7
5	3	2-1	3.20 × 4.20 = 13.4	2.7
6	3	2-1	3.04 × 3.20 = 9.7	3.5
7	3	2-1	3.19 × 4.20 = 13.4	2.7
8	3	2-1	2.99 × 3.20 = 9.6	3.8
9	3	2-2	3.19 × 4.20 = 13.4	2.7
10	3	2-1	2.96 × 3.20 = 9.5	3.8
11	2	2-2	3.20 × 4.20 = 13.4	2.7
12	3	2-1	2.94 × 3.20 = 9.4	3.9
13	3	2-2	3.20 × 4.20 = 13.4	2.6
14	2	2-2	3.09 × 3.20 = 9.9	3.7
15	1	2-2	3.20 × 4.20 = 13.4	2.7

Capacità portante e scorrimento

Punto maglia	Stratig.	caso-sestetto	Area eff. (mq)	Area reag. (mq)	q app. (daN/cm ²)	q lim. dren. (daN/cm ²)	q lim. NON dren. (daN/cm ²)	FS	caso-sestetto	H app. (daN)	H lim. (daN)	FS
1	1	2-1	13.44	13.44	2.6	19.4	3.4	1.33	1-1	0.0	119405.7	100.00
2	3	2-1	13.44	9.70	3.6	18.6	3.2	0.87	2-2	34263.0	77422.6	2.26
3	3	2-1	13.44	13.44	2.6	19.0	3.3	1.28	1-1	0.0	118626.2	100.00
4	3	2-1	13.44	9.59	3.7	19.1	3.3	0.88	2-2	34263.0	77911.0	2.27
5	3	2-1	13.44	13.44	2.7	20.5	3.7	1.34	1-1	0.0	122787.8	100.00
6	3	2-1	13.44	9.72	3.5	18.0	3.0	0.85	2-1	34263.0	76655.1	2.24
7	3	2-1	13.44	13.41	2.7	19.4	3.4	1.29	1-1	0.0	119317.2	100.00
8	3	2-1	13.44	9.57	3.8	19.1	3.3	0.87	2-1	34263.0	77835.0	2.27
9	3	2-2	13.44	13.41	2.7	19.9	3.6	1.31	1-1	0.0	113579.6	100.00
10	3	2-1	13.44	9.47	3.8	19.3	3.3	0.87	2-1	34263.0	77842.7	2.27
11	2	2-2	13.44	13.44	2.7	20.5	3.7	1.36	1-1	0.0	122849.8	100.00
12	3	2-1	13.44	9.42	3.9	19.5	3.4	0.87	2-1	34263.0	78002.2	2.28
13	3	2-2	13.44	13.44	2.6	19.1	3.4	1.29	1-1	0.0	109685.0	100.00
14	2	2-2	13.44	9.87	3.7	20.2	3.5	0.94	2-2	34263.0	80621.8	2.35
15	1	2-2	13.44	13.44	2.7	20.6	3.7	1.37	1-1	0.0	116750.3	100.00

Cedimenti

Punto maglia	Area equivalente (cmq)	Cedimento a breve termine (cm)	Cedimento a lungo termine: 30 anni (cm)
1	320.0 × 420.0	2.3	3.4
2	320.0 × 420.0	2.3	3.4
3	320.0 × 420.0	2.3	3.4
4	320.0 × 420.0	2.3	3.5
5	320.0 × 420.0	1.8	2.7
6	320.0 × 420.0	2.3	3.4
7	320.0 × 420.0	2.3	3.5
8	320.0 × 420.0	2.4	3.5
9	320.0 × 420.0	2.4	3.5
10	320.0 × 420.0	2.3	3.5
11	320.0 × 420.0	1.8	2.7
12	320.0 × 420.0	2.1	3.2
13	320.0 × 420.0	2.3	3.5
14	320.0 × 420.0	1.8	2.7
15	320.0 × 420.0	1.8	2.7

Tensioni sul magrone

Punto maglia	Vertice (x,y)	Pressione (daN/cm ²)	caso-sestetto
1	2413 ; -200	-2.90	2 - 1
1	2713 ; -200	-2.90	2 - 1
1	2713 ; 200	-2.90	2 - 1
1	2413 ; 200	-2.90	2 - 1
2	4976 ; -200	-0.40	2 - 1
2	5276 ; -200	-0.40	2 - 1
2	5276 ; 200	-5.44	2 - 1
2	4976 ; 200	-5.44	2 - 1
3	7539 ; -200	-2.91	2 - 1
3	7839 ; -200	-2.91	2 - 1
3	7839 ; 200	-2.91	2 - 1
3	7539 ; 200	-2.91	2 - 1
4	10102 ; -200	-0.33	2 - 1
4	10402 ; -200	-0.34	2 - 1
4	10402 ; 200	-5.63	2 - 1
4	10102 ; 200	-5.63	2 - 1
5	12665 ; -200	-3.07	2 - 2
5	12965 ; -200	-3.07	2 - 2
5	12965 ; 200	-3.07	2 - 2
5	12665 ; 200	-3.07	2 - 2
6	15228 ; -200	-0.41	2 - 1
6	15528 ; -200	-0.41	2 - 1
6	15528 ; 200	-5.32	2 - 1
6	15228 ; 200	-5.32	2 - 1
7	17791 ; -200	-2.95	2 - 1
7	18091 ; -200	-3.00	2 - 1
7	18091 ; 200	-3.00	2 - 1
7	17791 ; 200	-2.95	2 - 1
8	20354 ; -200	-0.32	2 - 1
8	20654 ; -200	-0.32	2 - 1
8	20654 ; 200	-5.70	2 - 1
8	20354 ; 200	-5.70	2 - 1
9	22917 ; -200	-3.05	2 - 1
9	23217 ; -200	-3.00	2 - 1
9	23217 ; 200	-3.00	2 - 1
9	22917 ; 200	-3.05	2 - 1

10	25480 ; -200	-5.76	2 - 2
10	25780 ; -200	-5.76	2 - 2
10	25780 ; 200	-0.26	2 - 2
10	25480 ; 200	-0.26	2 - 2
11	28043 ; -200	-3.04	2 - 1
11	28343 ; -200	-3.04	2 - 1
11	28343 ; 200	-3.04	2 - 1
11	28043 ; 200	-3.04	2 - 1
12	30606 ; -200	-0.22	2 - 1
12	30906 ; -200	-0.22	2 - 1
12	30906 ; 200	-5.85	2 - 1
12	30606 ; 200	-5.85	2 - 1
13	33169 ; -200	-2.93	2 - 2
13	33469 ; -200	-2.93	2 - 2
13	33469 ; 200	-2.93	2 - 2
13	33169 ; 200	-2.93	2 - 2
14	35732 ; -200	-5.58	2 - 2
14	36032 ; -200	-5.58	2 - 2
14	36032 ; 200	-0.55	2 - 2
14	35732 ; 200	-0.55	2 - 2
15	38295 ; -200	-3.03	2 - 2
15	38595 ; -200	-3.03	2 - 2
15	38595 ; 200	-3.03	2 - 2
15	38295 ; 200	-3.03	2 - 2

Tensioni sul terreno

Punto maglia	vertice (x,y)	Pressione (daN/cm ²)	caso-sestetto	Tipo caso
1	2 403 ; -210	-2.59	2 - 1	SLU
1	2 723 ; -210	-2.59	2 - 1	SLU
1	2 723 ; 210	-2.59	2 - 1	SLU
1	2 403 ; 210	-2.59	2 - 1	SLU
2	4 966 ; -210	-0.43	2 - 1	SLU
2	5 286 ; -210	-0.43	2 - 1	SLU
2	5 286 ; 210	-4.79	2 - 1	SLU
2	4 966 ; 210	-4.79	2 - 1	SLU
3	7 529 ; -210	-2.60	2 - 2	SLU
3	7 849 ; -210	-2.60	2 - 2	SLU
3	7 849 ; 210	-2.60	2 - 2	SLU
3	7 529 ; 210	-2.60	2 - 2	SLU
4	10 092 ; -210	-0.38	2 - 1	SLU
4	10 412 ; -210	-0.38	2 - 1	SLU
4	10 412 ; 210	-4.95	2 - 1	SLU
4	10 092 ; 210	-4.95	2 - 1	SLU
5	12 655 ; -210	-2.74	2 - 2	SLU
5	12 975 ; -210	-2.74	2 - 2	SLU
5	12 975 ; 210	-2.74	2 - 2	SLU
5	12 655 ; 210	-2.74	2 - 2	SLU
6	15 218 ; -210	-0.43	2 - 1	SLU
6	15 538 ; -210	-0.43	2 - 1	SLU
6	15 538 ; 210	-4.68	2 - 1	SLU
6	15 218 ; 210	-4.68	2 - 1	SLU
7	17 781 ; -210	-2.64	2 - 1	SLU
7	18 101 ; -210	-2.68	2 - 1	SLU
7	18 101 ; 210	-2.68	2 - 1	SLU
7	17 781 ; 210	-2.64	2 - 1	SLU
8	20 344 ; -210	-0.37	2 - 1	SLU

8	20 664 ; -210	-0.37	2 - 1	SLU
8	20 664 ; 210	-5.01	2 - 1	SLU
8	20 344 ; 210	-5.01	2 - 1	SLU
9	22 907 ; -210	-2.72	2 - 1	SLU
9	23 227 ; -210	-2.68	2 - 1	SLU
9	23 227 ; 210	-2.68	2 - 1	SLU
9	22 907 ; 210	-2.72	2 - 1	SLU
10	25 470 ; -210	-5.06	2 - 2	SLU
10	25 790 ; -210	-5.06	2 - 2	SLU
10	25 790 ; 210	-0.31	2 - 2	SLU
10	25 470 ; 210	-0.31	2 - 2	SLU
11	28 033 ; -210	-2.72	2 - 1	SLU
11	28 353 ; -210	-2.72	2 - 1	SLU
11	28 353 ; 210	-2.72	2 - 1	SLU
11	28 033 ; 210	-2.72	2 - 1	SLU
12	30 596 ; -210	-0.28	2 - 1	SLU
12	30 916 ; -210	-0.28	2 - 1	SLU
12	30 916 ; 210	-5.14	2 - 1	SLU
12	30 596 ; 210	-5.14	2 - 1	SLU
13	33 159 ; -210	-2.62	2 - 2	SLU
13	33 479 ; -210	-2.62	2 - 2	SLU
13	33 479 ; 210	-2.62	2 - 2	SLU
13	33 159 ; 210	-2.62	2 - 2	SLU
14	35 722 ; -210	-4.91	2 - 2	SLU
14	36 042 ; -210	-4.91	2 - 2	SLU
14	36 042 ; 210	-0.56	2 - 2	SLU
14	35 722 ; 210	-0.56	2 - 2	SLU
15	38 285 ; -210	-2.70	2 - 2	SLU
15	38 605 ; -210	-2.70	2 - 2	SLU
15	38 605 ; 210	-2.70	2 - 2	SLU
15	38 285 ; 210	-2.70	2 - 2	SLU

**Verifiche strutturali
Caratteristiche armatura**

Dimensione plinti = 400 cm x 300 cm x 120 cm

Armatura Inferiore

Tipo di armatura: Ferri a un piego uniformemente distribuiti
Diametro ferri: 6φ20 + 6φ26

Armatura Superiore

Tipo di armatura: Ferri a un piego uniformemente distribuiti
Diametro ferri: 4φ16
Copriferro: 5 cm

**Verifica Flessionale e Taglio Plinti
Analisi lungo X: sezioni parallele al piano Y'-z'
Momenti**

Punto maglia	caso-sestetto	Msd (daNxcM)	Mrd pos. (daNxcM)	Mrd neg. (daNxcM)	sez. (cm)	Af sup. (cmq)	Af inf. (cmq)	FS	X sez. (cm)
1-sx-tozzo	2-2	6955722	16527620	-2666081	400*120	8	50	2.4	-30.0
1-dx-tozzo	2-1	6955722	16527620	-2666081	400*120	8	50	2.4	30.0
2-sx-tozzo	2-1	7124379	16527620	-2666081	400*120	8	50	2.3	-30.0
2-dx-tozzo	2-1	7124545	16527620	-2666081	400*120	8	50	2.3	30.0
3-sx-tozzo	2-1	7118922	16527620	-2666081	400*120	8	50	2.3	-30.0
3-dx-tozzo	2-1	7118922	16527620	-2666081	400*120	8	50	2.3	30.0
4-sx-tozzo	2-1	7150844	16527620	-2666081	400*120	8	50	2.3	-30.0
4-dx-tozzo	2-1	7151009	16527620	-2666081	400*120	8	50	2.3	30.0
5-sx-tozzo	2-1	7180673	16527620	-2666081	400*120	8	50	2.3	-30.0
5-dx-tozzo	2-1	7180673	16527620	-2666081	400*120	8	50	2.3	30.0
6-sx-tozzo	2-2	7111147	16527620	-2666081	400*120	8	50	2.3	-30.0
6-dx-tozzo	2-1	7111312	16527620	-2666081	400*120	8	50	2.3	30.0

7-sx-tozzo	2-1	7136948	16527620	-2666081	400*120	8	50	2.3	-30.0
7-dx-tozzo	2-1	7240225	16527620	-2666081	400*120	8	50	2.3	30.0
8-sx-tozzo	2-2	7246065	16527620	-2666081	400*120	8	50	2.3	-30.0
8-dx-tozzo	2-1	7246231	16527620	-2666081	400*120	8	50	2.3	30.0
9-sx-tozzo	2-1	7262279	16527620	-2666081	400*120	8	50	2.3	-30.0
9-dx-tozzo	2-1	7159002	16527620	-2666081	400*120	8	50	2.3	30.0
10-sx-tozzo	2-1	7172898	16527620	-2666081	400*120	8	50	2.3	-30.0
10-dx-tozzo	2-1	7173063	16527620	-2666081	400*120	8	50	2.3	30.0
11-sx-tozzo	2-1	7105689	16527620	-2666081	400*120	8	50	2.3	-30.0
11-dx-tozzo	2-1	7105689	16527620	-2666081	400*120	8	50	2.3	30.0
12-sx-tozzo	2-2	7186130	16527620	-2666081	400*120	8	50	2.3	-30.0
12-dx-tozzo	2-1	7186296	16527620	-2666081	400*120	8	50	2.3	30.0
13-sx-tozzo	2-1	7145386	16527620	-2666081	400*120	8	50	2.3	-30.0
13-dx-tozzo	2-1	7145386	16527620	-2666081	400*120	8	50	2.3	30.0
14-sx-tozzo	2-1	7124379	16527620	-2666081	400*120	8	50	2.3	-30.0
14-dx-tozzo	2-2	7124545	16527620	-2666081	400*120	8	50	2.3	30.0
15-sx-tozzo	2-1	7030706	16527620	-2666081	400*120	8	50	2.4	-30.0
15-dx-tozzo	2-2	7030706	16527620	-2666081	400*120	8	50	2.4	30.0

Taglio

Punto maglia	caso-sestetto	Vsd (daN)	Vrd (daN)	Sez. (cm)	Af sup. (cmq)	Af inf. (cmq)	FS	X sez. (cm)
1-sx	2-2	0	88 783	400*120	8	50	>100	-175.0
1-dx	2-1	0	88 783	400*120	8	50	>100	175.0
2-sx	2-1	0	88 783	400*120	8	50	>100	-175.0
2-dx	2-1	0	88 783	400*120	8	50	>100	175.0
3-sx	2-1	0	88 783	400*120	8	50	>100	-175.0
3-dx	2-1	0	88 783	400*120	8	50	>100	175.0
4-sx	2-1	0	88 783	400*120	8	50	>100	-175.0
4-dx	2-1	0	88 783	400*120	8	50	>100	175.0
5-sx	2-1	0	88 783	400*120	8	50	>100	-175.0
5-dx	2-1	0	88 783	400*120	8	50	>100	175.0
6-sx	2-2	0	88 783	400*120	8	50	>100	-175.0
6-dx	2-1	0	88 783	400*120	8	50	>100	175.0
7-sx	2-1	0	88 783	400*120	8	50	>100	-175.0
7-dx	2-1	0	88 783	400*120	8	50	>100	175.0
8-sx	2-2	0	88 783	400*120	8	50	>100	-175.0
8-dx	2-1	0	88 783	400*120	8	50	>100	175.0
9-sx	2-1	0	88 783	400*120	8	50	>100	-175.0
9-dx	2-1	0	88 783	400*120	8	50	>100	175.0
10-sx	2-1	0	88 783	400*120	8	50	>100	-175.0
10-dx	2-1	0	88 783	400*120	8	50	>100	175.0
11-sx	2-1	0	88 783	400*120	8	50	>100	-175.0
11-dx	2-1	0	88 783	400*120	8	50	>100	175.0
12-sx	2-2	0	88 783	400*120	8	50	>100	-175.0
12-dx	2-1	0	88 783	400*120	8	50	>100	175.0
13-sx	2-1	0	88 783	400*120	8	50	>100	-175.0
13-dx	2-1	0	88 783	400*120	8	50	>100	175.0
14-sx	2-1	0	88 783	400*120	8	50	>100	-175.0
14-dx	2-2	0	88 783	400*120	8	50	>100	175.0
15-sx	2-1	0	88 783	400*120	8	50	>100	-175.0
15-dx	2-2	0	88 783	400*120	8	50	>100	175.0

Analisi lungo Y: sezioni parallele al piano X'-Z'

Momenti

Punto maglia	caso-sestetto	Msd (daNxcM)	Mrd pos. (daNxcM)	Mrd neg. (daNxcM)	sez. (cm)	Af sup. (cmq)	Af inf. (cmq)	FS	Y sez. (cm)
1-sx-tozzo	2-1	10469956	16527620	-2666081	300*120	8	50	1.6	-30.0
1-dx-tozzo	2-2	10469956	16527620	-2666081	300*120	8	50	1.6	30.0
2-sx-tozzo	2-1	18547325	16527620	-2666081	300*120	8	50	0.9	-30.0
2-dx-tozzo	2-2	18547325	16527620	-2666081	300*120	8	50	0.9	30.0
3-sx-tozzo	2-1	10715779	16527620	-2666081	300*120	8	50	1.5	-30.0
3-dx-tozzo	2-2	10715779	16527620	-2666081	300*120	8	50	1.5	30.0
4-sx-tozzo	2-1	18986300	16527620	-2666081	300*120	8	50	0.9	-30.0
4-dx-tozzo	2-2	18986300	16527620	-2666081	300*120	8	50	0.9	30.0
5-sx-tozzo	2-1	10808719	16527620	-2666081	300*120	8	50	1.5	-30.0
5-dx-tozzo	2-2	10808719	16527620	-2666081	300*120	8	50	1.5	30.0
6-sx-tozzo	2-1	18327836	16527620	-2666081	300*120	8	50	0.9	-30.0
6-dx-tozzo	2-2	18327836	16527620	-2666081	300*120	8	50	0.9	30.0
7-sx-tozzo	2-1	10820637	16527620	-2666081	300*120	8	50	1.5	-30.0
7-dx-tozzo	2-2	10820637	16527620	-2666081	300*120	8	50	1.5	30.0
8-sx-tozzo	2-1	19262675	16527620	-2666081	300*120	8	50	0.9	-30.0
8-dx-tozzo	2-2	19262675	16527620	-2666081	300*120	8	50	0.9	30.0
9-sx-tozzo	2-1	10853873	16527620	-2666081	300*120	8	50	1.5	-30.0
9-dx-tozzo	2-2	10853873	16527620	-2666081	300*120	8	50	1.5	30.0
10-sx-tozzo	2-1	19352112	16527620	-2666081	300*120	8	50	0.9	-30.0
10-dx-tozzo	2-2	19352112	16527620	-2666081	300*120	8	50	0.9	30.0
11-sx-tozzo	2-1	10695918	16527620	-2666081	300*120	8	50	1.5	-30.0
11-dx-tozzo	2-2	10695918	16527620	-2666081	300*120	8	50	1.5	30.0
12-sx-tozzo	2-1	19571598	16527620	-2666081	300*120	8	50	0.8	-30.0
12-dx-tozzo	2-2	19571598	16527620	-2666081	300*120	8	50	0.8	30.0
13-sx-tozzo	2-1	10755639	16527620	-2666081	300*120	8	50	1.5	-30.0
13-dx-tozzo	2-2	10755639	16527620	-2666081	300*120	8	50	1.5	30.0
14-sx-tozzo	2-1	18547325	16527620	-2666081	300*120	8	50	0.9	-30.0
14-dx-tozzo	2-2	18547325	16527620	-2666081	300*120	8	50	0.9	30.0
15-sx-tozzo	2-1	10582823	16527620	-2666081	300*120	8	50	1.6	-30.0
15-dx-tozzo	2-2	10582823	16527620	-2666081	300*120	8	50	1.6	30.0

Taglio

Punto maglia	caso-sestetto	Vsd (daN)	Vrd (daN)	Sez. (cm)	Af sup. (cmq)	Af inf. (cmq)	FS	Y sez. (cm)
1-sx	2-1	18 114	66 326	300*120	8	50	3.7	-175.0
1-dx	2-2	18 114	66 326	300*120	8	50	3.7	175.0
2-sx	2-1	36 260	66 326	300*120	8	50	1.8	-175.0
2-dx	2-2	36 260	66 326	300*120	8	50	1.8	175.0
3-sx	2-1	18 540	66 326	300*120	8	50	3.6	-175.0
3-dx	2-2	18 540	66 326	300*120	8	50	3.6	175.0
4-sx	2-1	37 232	66 326	300*120	8	50	1.8	-175.0
4-dx	2-2	37 232	66 326	300*120	8	50	1.8	175.0
5-sx	2-1	18 700	66 326	300*120	8	50	3.5	-175.0
5-dx	2-2	18 700	66 326	300*120	8	50	3.5	175.0
6-sx	2-1	35 773	66 326	300*120	8	50	1.9	-175.0
6-dx	2-2	35 773	66 326	300*120	8	50	1.9	175.0
7-sx	2-1	18 721	66 326	300*120	8	50	3.5	-175.0
7-dx	2-2	18 721	66 326	300*120	8	50	3.5	175.0
8-sx	2-1	37 781	66 326	300*120	8	50	1.8	-175.0
8-dx	2-2	37 781	66 326	300*120	8	50	1.8	175.0

9-sx	2-1	18 779	66 326	300*120	8	50	3.5	-175.0
9-dx	2-2	18 779	66 326	300*120	8	50	3.5	175.0
10-sx	2-1	38 042	66 326	300*120	8	50	1.7	-175.0
10-dx	2-2	38 042	66 326	300*120	8	50	1.7	175.0
11-sx	2-1	18 505	66 326	300*120	8	50	3.6	-175.0
11-dx	2-2	18 505	66 326	300*120	8	50	3.6	175.0
12-sx	2-1	38 528	66 326	300*120	8	50	1.7	-175.0
12-dx	2-2	38 528	66 326	300*120	8	50	1.7	175.0
13-sx	2-1	18 609	66 326	300*120	8	50	3.6	-175.0
13-dx	2-2	18 609	66 326	300*120	8	50	3.6	175.0
14-sx	2-1	36 260	66 326	300*120	8	50	1.8	-175.0
14-dx	2-2	36 260	66 326	300*120	8	50	1.8	175.0
15-sx	2-1	18 309	66 326	300*120	8	50	3.6	-175.0
15-dx	2-2	18 309	66 326	300*120	8	50	3.6	175.0

Verifica a Punzonamento

Punto maglia	caso-sestetto	l crit. (cm)	beta	Area crit. (cmq)	Perim. Crit. (cm)	v _{pd} (daN)	v _{pu} (daN)	FS
1	2 - 1	230.0	1.15	116 910	0	7 464	377 388	44.0
2	2 - 1	230.0	1.15	116 910	0	7 645	377 388	42.9
3	2 - 1	230.0	1.15	116 910	0	7 639	377 388	43.0
4	2 - 1	230.0	1.15	116 910	0	7 673	377 388	42.8
5	2 - 1	230.0	1.15	116 910	0	7 705	377 388	42.6
6	2 - 1	230.0	1.15	116 910	0	7 630	377 388	43.0
7	2 - 1	230.0	1.15	116 910	0	7 713	377 388	42.5
8	2 - 1	230.0	1.15	116 910	0	7 775	377 388	42.2
9	2 - 1	230.0	1.15	116 910	0	7 737	377 388	42.4
10	2 - 1	230.0	1.15	116 910	0	7 697	377 388	42.6
11	2 - 1	230.0	1.15	116 910	0	7 624	377 388	43.0
12	2 - 1	230.0	1.15	116 910	0	7 711	377 388	42.6
13	2 - 1	230.0	1.15	116 910	0	7 667	377 388	42.8
14	2 - 1	230.0	1.15	116 910	0	7 645	377 388	42.9
15	2 - 1	230.0	1.15	116 910	0	7 544	377 388	43.5

RISULTATI ANALISI STATO DI FATTO (SISMICA):

c.port. [fs]	scorr. [fs]	cedim. [cm]	σ mgr. [daN/cm ²]	σ ter. [daN/cm ²]
5 (0.75) ●	5 (1.28)	9 (3.580) ●	5 (-7.68)	5 (-6.48)
12 (0.77) ●	12 (1.29)	8 (3.574) ●	12 (-7.41)	12 (-6.26)
9 (0.89) ●	4 (1.42)	10 (3.559) ●	9 (-6.89)	9 (-5.87)
13 (0.92) ●	13 (1.43)	7 (3.542) ●	4 (-6.52)	4 (-5.58)
4 (0.92) ●	9 (1.45)	4 (3.535) ●	10 (-6.31)	10 (-5.42)
8 (0.98) ●	3 (1.60)	13 (3.503) ●	13 (-6.28)	13 (-5.37)
10 (0.99) ●	10 (1.61)	2 (3.488) ●	8 (-6.22)	8 (-5.35)
3 (1.01)	2 (1.63)	3 (3.484) ●	3 (-5.62)	3 (-4.86)
6 (1.01)	8 (1.64)	6 (3.446) ●	7 (-5.55)	7 (-4.81)
2 (1.04)	14 (1.83)	1 (3.436) ●	6 (-5.45)	11 (-4.74)
7 (1.06)	6 (1.84)	12 (3.200) ●	11 (-5.45)	6 (-4.73)
1 (1.13)	7 (1.93)	5 (2.765) ●	2 (-5.36)	2 (-4.65)
11 (1.13)	11 (1.95)	14 (2.751) ●	14 (-5.23)	14 (-4.57)
14 (1.14)	15 (2.38)	11 (2.738) ●	15 (-4.25)	15 (-3.76)
15 (1.16)	1 (3.88)	15 (2.717) ●	1 (-3.97)	1 (-3.55)

Riassunto verifiche plinti (parte 1)

R.pli. [fs]	R.mgr. [fs]	Fles. [fs]	Tagl. [fs]	Punz. [fs]	Bicc. [fs]
9 (5.68)	9 (5.94)	5 (0.79) ●	5 (1.46)	8 (42.21)	1 (- - -)
12 (5.69)	13 (5.95)	12 (0.81) ●	12 (1.50)	9 (42.38)	2 (- - -)
13 (5.69)	12 (5.95)	9 (0.88) ●	9 (1.67)	7 (42.51)	3 (- - -)
10 (5.71)	10 (5.97)	4 (0.90) ●	4 (1.72)	5 (42.56)	4 (- - -)
5 (5.76)	5 (6.02)	13 (0.91) ●	13 (1.75)	12 (42.56)	5 (- - -)
8 (5.77)	8 (6.03)	10 (0.94) ●	10 (1.82)	10 (42.64)	6 (- - -)
4 (5.77)	4 (6.03)	8 (0.96) ●	8 (1.87)	13 (42.77)	7 (- - -)
7 (5.85)	7 (6.11)	3 (1.01)	3 (1.97)	4 (42.77)	8 (- - -)
6 (5.86)	6 (6.12)	2 (1.03)	2 (2.01)	3 (42.93)	9 (- - -)
3 (5.93)	3 (6.19)	7 (1.06)	7 (2.11)	14 (42.93)	10 (- - -)
11 (6.15)	11 (6.41)	14 (1.06)	14 (2.11)	2 (42.93)	11 (- - -)
2 (6.16)	2 (6.43)	6 (1.10)	6 (2.18)	11 (43.01)	12 (- - -)
14 (6.32)	14 (6.59)	11 (1.10)	11 (2.19)	6 (43.01)	13 (- - -)
15 (7.50)	15 (7.80)	15 (1.20)	15 (2.59)	15 (43.47)	14 (- - -)
1 (8.55)	1 (8.86)	1 (1.25)	1 (2.73)	1 (43.93)	15 (- - -)

Riassunto verifiche plinti (parte 2)

Casi di carico

Caso 1

Descrizione: SLU

Coefficiente moltiplicatore: Peso Proprio Plinti, Magrone, Rinterro = 1.3

Punto maglia	sestetto	N (daN)	Mx (daNxcM)	My (daNxcM)	Tx (daN)	Ty (daN)
1	1	290051	0	806747	2847	0
2	1	296852	0	327241	699	0
3	1	296853	0	262113	559	0
4	1	297955	0	185530	373	0
5	1	299427	0	120991	224	0
6	1	296301	0	101526	224	0
7	1	299757	0	8191	-279	0
8	1	301923	0	-4052	-8	0
9	1	300675	0	-11832	257	0
10	1	298874	0	-90308	-173	0
11	1	296303	0	-166059	-368	0
12	1	299426	0	-173949	-323	0
13	1	297957	0	-249702	-503	0
14	1	296853	0	-339180	-724	0
15	1	293180	0	-582792	-1586	0

Caso 2

Descrizione: SLU VENTOY

Coefficiente moltiplicatore: Peso Proprio Plinti, Magrone, Rinterro = 1.3

Punto maglia	sestetto	N (daN)	Mx (daNxcM)	My (daNxcM)	Tx (daN)	Ty (daN)
1	1	290051	-4922035	806690	2847	17383
1	2	290051	4922035	806805	2847	-17383
2	1	296852	-7786194	327218	699	16658
2	2	296852	7786194	327264	700	-16658
3	1	296853	-8085326	262095	559	17271
3	2	296853	8085326	262132	559	-17271
4	1	297955	-8571457	185517	373	17211
4	2	297955	8571457	185543	373	-17211
5	1	299427	-8955281	120983	224	16658
5	2	299427	8955281	121000	224	-16658
6	1	296301	-7997609	101519	224	17637
6	2	296301	7997609	101533	224	-17637
7	1	299757	-8470486	8188	-279	17011
7	2	299757	8470486	8194	-279	-17011
8	1	301923	-8718171	-4052	-8	17162
8	2	301923	8718171	-4053	-8	-17162
9	1	300675	-8931595	-11828	257	17079
9	2	300675	8931595	-11835	257	-17079
10	1	298874	-8824441	-90301	-173	16880
10	2	298874	8824441	-90314	-173	-16880
11	1	296303	-8050380	-166047	-368	17749
11	2	296303	8050380	-166070	-368	-17749
12	1	299426	-8958275	-173937	-323	16665
12	2	299426	8958275	-173962	-323	-16665
13	1	297957	-8569130	-249684	-503	17206
13	2	297957	8569130	-249719	-503	-17206
14	1	296853	-7931160	-339155	-724	16955
14	2	296853	7931160	-339205	-725	-16955
15	1	293180	-6258633	-582750	-1585	17023
15	2	293180	6258633	-582833	-1586	-17023

Caso 3
Descrizione: SLU con SISMAX PRINC

Punto maglia	sestetto	N (daN)	Mx (daNxcM)	My (daNxcM)	Tx (daN)	Ty (daN)
1	1	208436	-1066475	5354189	18980	3752
1	2	208436	-1565064	5354189	18980	5524
1	3	208436	1543219	5354189	18980	-5449
1	4	208436	1044630	5354189	18980	-3678
1	5	208436	-1044630	5354189	18980	3678
1	6	208436	-1543219	5354189	18980	5449
1	7	208436	1565064	5354189	18980	-5524
1	8	208436	1066475	5354189	18980	-3752
1	9	208446	-1066475	-4203920	-14920	3752
1	10	208446	-1565064	-4203920	-14920	5524
1	11	208446	1543219	-4203920	-14920	-5449
1	12	208446	1044630	-4203920	-14920	-3678
1	13	208446	-1044630	-4203920	-14920	3678
1	14	208446	-1543219	-4203920	-14920	5449
1	15	208446	1565064	-4203920	-14920	-5524
1	16	208446	1066475	-4203920	-14920	-3752
2	1	213684	-4099865	4513317	9668	8792
2	2	213684	-4786082	4513317	9668	10268
2	3	213684	4767791	4513317	9668	-10230
2	4	213684	4081574	4513317	9668	-8754
2	5	213684	-4081574	4513317	9668	8754
2	6	213684	-4767791	4513317	9668	10230
2	7	213684	4786082	4513317	9668	-10268
2	8	213684	4099865	4513317	9668	-8792
2	9	213660	-4099865	-4046900	-8671	8792
2	10	213660	-4786082	-4046900	-8671	10268
2	11	213660	4767791	-4046900	-8671	-10230
2	12	213660	4081574	-4046900	-8671	-8754
2	13	213660	-4081574	-4046900	-8671	8754
2	14	213660	-4767791	-4046900	-8671	10230
2	15	213660	4786082	-4046900	-8671	-10268
2	16	213660	4099865	-4046900	-8671	-8792
3	1	213691	-4295055	6239061	13401	9193
3	2	213691	-4891971	6239061	13401	10474
3	3	213691	4881432	6239061	13401	-10453
3	4	213691	4284516	6239061	13401	-9172
3	5	213691	-4284516	6239061	13401	9172
3	6	213691	-4881432	6239061	13401	10453
3	7	213691	4891971	6239061	13401	-10474
3	8	213691	4295055	6239061	13401	-9193
3	9	213656	-4295055	-5865677	-12605	9193
3	10	213656	-4891971	-5865677	-12605	10474
3	11	213656	4881432	-5865677	-12605	-10453
3	12	213656	4284516	-5865677	-12605	-9172
3	13	213656	-4284516	-5865677	-12605	9172
3	14	213656	-4881432	-5865677	-12605	10453
3	15	213656	4891971	-5865677	-12605	-10474
3	16	213656	4295055	-5865677	-12605	-9193
4	1	214545	-5187297	7084079	14279	10436
4	2	214545	-5694773	7084079	14279	11460
4	3	214545	5688606	7084079	14279	-11449
4	4	214545	5181131	7084079	14279	-10425
4	5	214545	-5181131	7084079	14279	10425

4	6	214545	-5688606	7084079	14279	11449
4	7	214545	5694773	7084079	14279	-11460
4	8	214545	5187297	7084079	14279	-10436
4	9	214496	-5187297	-6820029	-13748	10436
4	10	214496	-5694773	-6820029	-13748	11460
4	11	214496	5688606	-6820029	-13748	-11449
4	12	214496	5181131	-6820029	-13748	-10425
4	13	214496	-5181131	-6820029	-13748	10425
4	14	214496	-5688606	-6820029	-13748	11449
4	15	214496	5694773	-6820029	-13748	-11460
4	16	214496	5187297	-6820029	-13748	-10436
5	1	215684	-6230129	7330786	13706	11621
5	2	215684	-6633497	7330786	13706	12373
5	3	215684	6629803	7330786	13706	-12367
5	4	215684	6226435	7330786	13706	-11616
5	5	215684	-6226435	7330786	13706	11616
5	6	215684	-6629803	7330786	13706	12367
5	7	215684	6633497	7330786	13706	-12373
5	8	215684	6230129	7330786	13706	-11621
5	9	215621	-6230129	-7158860	-13388	11621
5	10	215621	-6633497	-7158860	-13388	12373
5	11	215621	6629803	-7158860	-13388	-12367
5	12	215621	6226435	-7158860	-13388	-11616
5	13	215621	-6226435	-7158860	-13388	11616
5	14	215621	-6629803	-7158860	-13388	12367
5	15	215621	6633497	-7158860	-13388	-12373
5	16	215621	6230129	-7158860	-13388	-11621
6	1	213275	-4055825	10400394	23040	8950
6	2	213275	-4297307	10400394	23040	9485
6	3	213275	4295191	10400394	23040	-9482
6	4	213275	4053710	10400394	23040	-8947
6	5	213275	-4053710	10400394	23040	8947
6	6	213275	-4295191	10400394	23040	9482
6	7	213275	4297307	10400394	23040	-9485
6	8	213275	4055825	10400394	23040	-8950
6	9	213221	-4055825	-10256617	-22723	8950
6	10	213221	-4297307	-10256617	-22723	9485
6	11	213221	4295191	-10256617	-22723	-9482
6	12	213221	4053710	-10256617	-22723	-8947
6	13	213221	-4053710	-10256617	-22723	8947
6	14	213221	-4295191	-10256617	-22723	9482
6	15	213221	4297307	-10256617	-22723	-9485
6	16	213221	4055825	-10256617	-22723	-8950
7	1	215516	-4450815	9570260	19150	8953
7	2	215516	-4580545	9570260	19150	9214
7	3	215516	4579196	9570260	19150	-9213
7	4	215516	4449466	9570260	19150	-8951
7	5	215516	-4449466	9570260	19150	8951
7	6	215516	-4579196	9570260	19150	9213
7	7	215516	4580545	9570260	19150	-9214
7	8	215516	4450815	9570260	19150	-8953
7	9	215448	-4450815	-9547023	-19419	8953
7	10	215448	-4580545	-9547023	-19419	9214
7	11	215448	4579196	-9547023	-19419	-9213
7	12	215448	4449466	-9547023	-19419	-8951
7	13	215448	-4449466	-9547023	-19419	8951

7	14	215448	-4579196	-9547023	-19419	9213
7	15	215448	4580545	-9547023	-19419	-9214
7	16	215448	4450815	-9547023	-19419	-8953
8	1	216759	-5270865	9494928	18779	10394
8	2	216759	-5277118	9494928	18779	10406
8	3	216759	5276505	9494928	18779	-10406
8	4	216759	5270252	9494928	18779	-10394
8	5	216759	-5270252	9494928	18779	10394
8	6	216759	-5276505	9494928	18779	10406
8	7	216759	5277118	9494928	18779	-10406
8	8	216759	5270865	9494928	18779	-10394
8	9	216688	-5270865	-9500822	-18790	10394
8	10	216688	-5277118	-9500822	-18790	10406
8	11	216688	5276505	-9500822	-18790	-10406
8	12	216688	5270252	-9500822	-18790	-10394
8	13	216688	-5270252	-9500822	-18790	10394
8	14	216688	-5276505	-9500822	-18790	10406
8	15	216688	5277118	-9500822	-18790	-10406
8	16	216688	5270865	-9500822	-18790	-10394
9	1	216225	-5919462	8939303	17321	11342
9	2	216225	-5795169	8939303	17321	11104
9	3	216225	5795384	8939303	17321	-11105
9	4	216225	5919677	8939303	17321	-11343
9	5	216225	-5919677	8939303	17321	11343
9	6	216225	-5795384	8939303	17321	11105
9	7	216225	5795169	8939303	17321	-11104
9	8	216225	5919462	8939303	17321	-11342
9	9	216152	-5919462	-8968402	-17079	11342
9	10	216152	-5795169	-8968402	-17079	11104
9	11	216152	5795384	-8968402	-17079	-11105
9	12	216152	5919677	-8968402	-17079	-11343
9	13	216152	-5919677	-8968402	-17079	11343
9	14	216152	-5795384	-8968402	-17079	11105
9	15	216152	5795169	-8968402	-17079	-11104
9	16	216152	5919462	-8968402	-17079	-11342
10	1	215262	-5475522	8403281	16153	10493
10	2	215262	-5226017	8403281	16153	10015
10	3	215262	5227020	8403281	16153	-10018
10	4	215262	5476525	8403281	16153	-10497
10	5	215262	-5476525	8403281	16153	10497
10	6	215262	-5227020	8403281	16153	10018
10	7	215262	5226017	8403281	16153	-10015
10	8	215262	5475522	8403281	16153	-10493
10	9	215193	-5475522	-8531410	-16398	10493
10	10	215193	-5226017	-8531410	-16398	10015
10	11	215193	5227020	-8531410	-16398	-10018
10	12	215193	5476525	-8531410	-16398	-10497
10	13	215193	-5476525	-8531410	-16398	10497
10	14	215193	-5227020	-8531410	-16398	10018
10	15	215193	5226017	-8531410	-16398	-10015
10	16	215193	5475522	-8531410	-16398	-10493
11	1	213274	-4315454	9338860	20679	9517
11	2	213274	-3968684	9338860	20679	8748
11	3	213274	3970878	9338860	20679	-8754
11	4	213274	4317648	9338860	20679	-9523
11	5	213274	-4317648	9338860	20679	9523

11	6	213274	-3970878	9338860	20679	8754
11	7	213274	3968684	9338860	20679	-8748
11	8	213274	4315454	9338860	20679	-9517
11	9	213225	-4315454	-9575021	-21203	9517
11	10	213225	-3968684	-9575021	-21203	8748
11	11	213225	3970878	-9575021	-21203	-8754
11	12	213225	4317648	-9575021	-21203	-9523
11	13	213225	-4317648	-9575021	-21203	9523
11	14	213225	-3970878	-9575021	-21203	8754
11	15	213225	3968684	-9575021	-21203	-8748
11	16	213225	4315454	-9575021	-21203	-9517
12	1	215679	-6488998	6196435	11588	12104
12	2	215679	-5968523	6196435	11588	11134
12	3	215679	5973822	6196435	11588	-11145
12	4	215679	6494297	6196435	11588	-12115
12	5	215679	-6494297	6196435	11588	12115
12	6	215679	-5973822	6196435	11588	11145
12	7	215679	5968523	6196435	11588	-11134
12	8	215679	6488998	6196435	11588	-12104
12	9	215624	-6488998	-6444109	-12048	12104
12	10	215624	-5968523	-6444109	-12048	11134
12	11	215624	5973822	-6444109	-12048	-11145
12	12	215624	6494297	-6444109	-12048	-12115
12	13	215624	-6494297	-6444109	-12048	12115
12	14	215624	-5973822	-6444109	-12048	11145
12	15	215624	5968523	-6444109	-12048	-11134
12	16	215624	6488998	-6444109	-12048	-12104
13	1	214542	-5568362	5492997	11062	11210
13	2	214542	-4949399	5492997	11062	9960
13	3	214542	4959311	5492997	11062	-9981
13	4	214542	5578273	5492997	11062	-11231
13	5	214542	-5578273	5492997	11062	11231
13	6	214542	-4959311	5492997	11062	9981
13	7	214542	4949399	5492997	11062	-9960
13	8	214542	5568362	5492997	11062	-11210
13	9	214502	-5568362	-5848770	-11778	11210
13	10	214502	-4949399	-5848770	-11778	9960
13	11	214502	4959311	-5848770	-11778	-9981
13	12	214502	5578273	-5848770	-11778	-11231
13	13	214502	-5578273	-5848770	-11778	11231
13	14	214502	-4959311	-5848770	-11778	9981
13	15	214502	4949399	-5848770	-11778	-9960
13	16	214502	5568362	-5848770	-11778	-11210
14	1	213686	-4564678	4195827	9018	9790
14	2	213686	-3878121	4195827	9018	8313
14	3	213686	3895691	4195827	9018	-8352
14	4	213686	4582248	4195827	9018	-9828
14	5	213686	-4582248	4195827	9018	9828
14	6	213686	-3895691	4195827	9018	8352
14	7	213686	3878121	4195827	9018	-8313
14	8	213686	4564678	4195827	9018	-9790
14	9	213660	-4564678	-4679301	-10050	9790
14	10	213660	-3878121	-4679301	-10050	8313
14	11	213660	3895691	-4679301	-10050	-8352
14	12	213660	4582248	-4679301	-10050	-9828
14	13	213660	-4582248	-4679301	-10050	9828

14	14	213660	-3895691	-4679301	-10050	8352
14	15	213660	3878121	-4679301	-10050	-8313
14	16	213660	4564678	-4679301	-10050	-9790
15	1	210850	-2991952	3119549	8471	8157
15	2	210850	-2364071	3119549	8471	6439
15	3	210850	2390541	3119549	8471	-6513
15	4	210850	3018421	3119549	8471	-8230
15	5	210850	-3018421	3119549	8471	8230
15	6	210850	-2390541	3119549	8471	6513
15	7	210850	2364071	3119549	8471	-6439
15	8	210850	2991952	3119549	8471	-8157
15	9	210844	-2991952	-3950512	-10732	8157
15	10	210844	-2364071	-3950512	-10732	6439
15	11	210844	2390541	-3950512	-10732	-6513
15	12	210844	3018421	-3950512	-10732	-8230
15	13	210844	-3018421	-3950512	-10732	8230
15	14	210844	-2390541	-3950512	-10732	6513
15	15	210844	2364071	-3950512	-10732	-6439
15	16	210844	2991952	-3950512	-10732	-8157

Caso 4
Descrizione: SLU con SISMAY PRINC

Punto maglia	sestetto	N (daN)	Mx (daNxcM)	My (daNxcM)	Tx (daN)	Ty (daN)
1	1	208439	-3521785	2008851	7115	12395
1	2	208439	-3515232	2008851	7115	12372
1	3	208442	-3521785	-858582	-3055	12395
1	4	208442	-3515232	-858582	-3055	12372
1	5	208439	-5183748	2008851	7115	18299
1	6	208439	-5177194	2008851	7115	18277
1	7	208442	-5183748	-858582	-3055	18299
1	8	208442	-5177194	-858582	-3055	18277
1	9	208439	5177194	2008851	7115	-18277
1	10	208439	5183748	2008851	7115	-18299
1	11	208442	5177194	-858582	-3055	-18277
1	12	208442	5183748	-858582	-3055	-18299
1	13	208439	3515232	2008851	7115	-12372
1	14	208439	3521785	2008851	7115	-12395
1	15	208442	3515232	-858582	-3055	-12372
1	16	208442	3521785	-858582	-3055	-12395
2	1	213676	-13638476	1517241	3249	29250
2	2	213676	-13632988	1517241	3249	29238
2	3	213668	-13638476	-1050824	-2252	29250
2	4	213668	-13632988	-1050824	-2252	29238
2	5	213676	-15925867	1517241	3249	34169
2	6	213676	-15920379	1517241	3249	34158
2	7	213668	-15925867	-1050824	-2252	34169
2	8	213668	-15920379	-1050824	-2252	34158
2	9	213676	15920379	1517241	3249	-34158
2	10	213676	15925867	1517241	3249	-34169
2	11	213668	15920379	-1050824	-2252	-34158
2	12	213668	15925867	-1050824	-2252	-34169
2	13	213676	13632988	1517241	3249	-29238
2	14	213676	13638476	1517241	3249	-29250
2	15	213668	13632988	-1050824	-2252	-29238
2	16	213668	13638476	-1050824	-2252	-29250
3	1	213678	-14300866	2002402	4299	30611

3	2	213678	-14297705	2002402	4299	30605
3	3	213668	-14300866	-1629019	-3503	30611
3	4	213668	-14297705	-1629019	-3503	30605
3	5	213678	-16290586	2002402	4299	34882
3	6	213678	-16287424	2002402	4299	34876
3	7	213668	-16290586	-1629019	-3503	34882
3	8	213668	-16287424	-1629019	-3503	34876
3	9	213678	16287424	2002402	4299	-34876
3	10	213678	16290586	2002402	4299	-34882
3	11	213668	16287424	-1629019	-3503	-34876
3	12	213668	16290586	-1629019	-3503	-34882
3	13	213678	14297705	2002402	4299	-30605
3	14	213678	14300866	2002402	4299	-30611
3	15	213668	14297705	-1629019	-3503	-30605
3	16	213668	14300866	-1629019	-3503	-30611
4	1	214528	-17281639	2217641	4469	34769
4	2	214528	-17279789	2217641	4469	34765
4	3	214513	-17281639	-1953591	-3939	34769
4	4	214513	-17279789	-1953591	-3939	34765
4	5	214528	-18973223	2217641	4469	38182
4	6	214528	-18971373	2217641	4469	38179
4	7	214513	-18973223	-1953591	-3939	38182
4	8	214513	-18971373	-1953591	-3939	38179
4	9	214528	18971373	2217641	4469	-38179
4	10	214528	18973223	2217641	4469	-38182
4	11	214513	18971373	-1953591	-3939	-38179
4	12	214513	18973223	-1953591	-3939	-38182
4	13	214528	17279789	2217641	4469	-34765
4	14	214528	17281639	2217641	4469	-34769
4	15	214513	17279789	-1953591	-3939	-34765
4	16	214513	17281639	-1953591	-3939	-34769
5	1	215662	-20761494	2259410	4223	38729
5	2	215662	-20760385	2259410	4223	38727
5	3	215643	-20761494	-2087483	-3905	38729
5	4	215643	-20760385	-2087483	-3905	38727
5	5	215662	-22106054	2259410	4223	41234
5	6	215662	-22104945	2259410	4223	41232
5	7	215643	-22106054	-2087483	-3905	41234
5	8	215643	-22104945	-2087483	-3905	41232
5	9	215662	22104945	2259410	4223	-41232
5	10	215662	22106054	2259410	4223	-41234
5	11	215643	22104945	-2087483	-3905	-41232
5	12	215643	22106054	-2087483	-3905	-41234
5	13	215662	20760385	2259410	4223	-38727
5	14	215662	20761494	2259410	4223	-38729
5	15	215643	20760385	-2087483	-3905	-38727
5	16	215643	20761494	-2087483	-3905	-38729
6	1	213256	-13516210	3170440	7023	29830
6	2	213256	-13515575	3170440	7023	29829
6	3	213240	-13516210	-3026663	-6706	29830
6	4	213240	-13515575	-3026663	-6706	29829
6	5	213256	-14321148	3170440	7023	31612
6	6	213256	-14320513	3170440	7023	31611
6	7	213240	-14321148	-3026663	-6706	31612
6	8	213240	-14320513	-3026663	-6706	31611
6	9	213256	14320513	3170440	7023	-31611

6	10	213256	14321148	3170440	7023	-31612
6	11	213240	14320513	-3026663	-6706	-31611
6	12	213240	14321148	-3026663	-6706	-31612
6	13	213256	13515575	3170440	7023	-29829
6	14	213256	13516210	3170440	7023	-29830
6	15	213240	13515575	-3026663	-6706	-29829
6	16	213240	13516210	-3026663	-6706	-29830
7	1	215492	-14834002	2879211	5651	29841
7	2	215492	-14833598	2879211	5651	29840
7	3	215472	-14834002	-2855974	-5920	29841
7	4	215472	-14833598	-2855974	-5920	29840
7	5	215492	-15266437	2879211	5651	30713
7	6	215492	-15266032	2879211	5651	30712
7	7	215472	-15266437	-2855974	-5920	30713
7	8	215472	-15266032	-2855974	-5920	30712
7	9	215492	15266032	2879211	5651	-30712
7	10	215492	15266437	2879211	5651	-30713
7	11	215472	15266032	-2855974	-5920	-30712
7	12	215472	15266437	-2855974	-5920	-30713
7	13	215492	14833598	2879211	5651	-29840
7	14	215492	14834002	2879211	5651	-29841
7	15	215472	14833598	-2855974	-5920	-29840
7	16	215472	14834002	-2855974	-5920	-29841
8	1	216734	-17568620	2846416	5630	34647
8	2	216734	-17568436	2846416	5630	34647
8	3	216713	-17568620	-2852310	-5641	34647
8	4	216713	-17568436	-2852310	-5641	34647
8	5	216734	-17589463	2846416	5630	34687
8	6	216734	-17589279	2846416	5630	34687
8	7	216713	-17589463	-2852310	-5641	34687
8	8	216713	-17589279	-2852310	-5641	34687
8	9	216734	17589279	2846416	5630	-34687
8	10	216734	17589463	2846416	5630	-34687
8	11	216713	17589279	-2852310	-5641	-34687
8	12	216713	17589463	-2852310	-5641	-34687
8	13	216734	17568436	2846416	5630	-34647
8	14	216734	17568620	2846416	5630	-34647
8	15	216713	17568436	-2852310	-5641	-34647
8	16	216713	17568620	-2852310	-5641	-34647
9	1	216199	-19731866	2671607	5281	37808
9	2	216199	-19731930	2671607	5281	37808
9	3	216178	-19731866	-2700705	-5039	37808
9	4	216178	-19731930	-2700705	-5039	37808
9	5	216199	-19317557	2671607	5281	37014
9	6	216199	-19317621	2671607	5281	37015
9	7	216178	-19317557	-2700705	-5039	37014
9	8	216178	-19317621	-2700705	-5039	37015
9	9	216199	19317621	2671607	5281	-37015
9	10	216199	19317557	2671607	5281	-37014
9	11	216178	19317621	-2700705	-5039	-37015
9	12	216178	19317557	-2700705	-5039	-37014
9	13	216199	19731930	2671607	5281	-37808
9	14	216199	19731866	2671607	5281	-37808
9	15	216178	19731930	-2700705	-5039	-37808
9	16	216178	19731866	-2700705	-5039	-37808
10	1	215238	-18253262	2476140	4760	34983

10	2	215238	-18253563	2476140	4760	34984
10	3	215217	-18253262	-2604268	-5005	34983
10	4	215217	-18253563	-2604268	-5005	34984
10	5	215238	-17421577	2476140	4760	33389
10	6	215238	-17421878	2476140	4760	33390
10	7	215217	-17421577	-2604268	-5005	33389
10	8	215217	-17421878	-2604268	-5005	33390
10	9	215238	17421878	2476140	4760	-33390
10	10	215238	17421577	2476140	4760	-33389
10	11	215217	17421878	-2604268	-5005	-33390
10	12	215217	17421577	-2604268	-5005	-33389
10	13	215238	18253563	2476140	4760	-34984
10	14	215238	18253262	2476140	4760	-34983
10	15	215217	18253563	-2604268	-5005	-34984
10	16	215217	18253262	-2604268	-5005	-34983
11	1	213257	-14388174	2719002	6021	31732
11	2	213257	-14388833	2719002	6021	31734
11	3	213242	-14388174	-2955163	-6544	31732
11	4	213242	-14388833	-2955163	-6544	31734
11	5	213257	-13232275	2719002	6021	29170
11	6	213257	-13232933	2719002	6021	29172
11	7	213242	-13232275	-2955163	-6544	29170
11	8	213242	-13232933	-2955163	-6544	29172
11	9	213257	13232933	2719002	6021	-29172
11	10	213257	13232275	2719002	6021	-29170
11	11	213242	13232933	-2955163	-6544	-29172
11	12	213242	13232275	-2955163	-6544	-29170
11	13	213257	14388833	2719002	6021	-31734
11	14	213257	14388174	2719002	6021	-31732
11	15	213242	14388833	-2955163	-6544	-31734
11	16	213242	14388174	-2955163	-6544	-31732
12	1	215660	-21638029	1772244	3315	40363
12	2	215660	-21639619	1772244	3315	40367
12	3	215644	-21638029	-2019919	-3776	40363
12	4	215644	-21639619	-2019919	-3776	40367
12	5	215660	-19903114	1772244	3315	37131
12	6	215660	-19904704	1772244	3315	37134
12	7	215644	-19903114	-2019919	-3776	37131
12	8	215644	-19904704	-2019919	-3776	37134
12	9	215660	19904704	1772244	3315	-37134
12	10	215660	19903114	1772244	3315	-37131
12	11	215644	19904704	-2019919	-3776	-37134
12	12	215644	19903114	-2019919	-3776	-37131
12	13	215660	21639619	1772244	3315	-40367
12	14	215660	21638029	1772244	3315	-40363
12	15	215644	21639619	-2019919	-3776	-40367
12	16	215644	21638029	-2019919	-3776	-40363
13	1	214528	-18576238	1523378	3068	37398
13	2	214528	-18579212	1523378	3068	37404
13	3	214516	-18576238	-1879152	-3784	37398
13	4	214516	-18579212	-1879152	-3784	37404
13	5	214528	-16513030	1523378	3068	33231
13	6	214528	-16516004	1523378	3068	33238
13	7	214516	-16513030	-1879152	-3784	33231
13	8	214516	-16516004	-1879152	-3784	33238
13	9	214528	16516004	1523378	3068	-33238

13	10	214528	16513030	1523378	3068	-33231
13	11	214516	16516004	-1879152	-3784	-33238
13	12	214516	16513030	-1879152	-3784	-33231
13	13	214528	18579212	1523378	3068	-37404
13	14	214528	18576238	1523378	3068	-37398
13	15	214516	18579212	-1879152	-3784	-37404
13	16	214516	18576238	-1879152	-3784	-37398
14	1	213677	-15242242	1089532	2344	32691
14	2	213677	-15247513	1089532	2344	32702
14	3	213669	-15242242	-1573007	-3377	32691
14	4	213669	-15247513	-1573007	-3377	32702
14	5	213677	-12953717	1089532	2344	27770
14	6	213677	-12958988	1089532	2344	27782
14	7	213669	-12953717	-1573007	-3377	27770
14	8	213669	-12958988	-1573007	-3377	27782
14	9	213677	12958988	1089532	2344	-27782
14	10	213677	12953717	1089532	2344	-27770
14	11	213669	12958988	-1573007	-3377	-27782
14	12	213669	12953717	-1573007	-3377	-27770
14	13	213677	15247513	1089532	2344	-32702
14	14	213677	15242242	1089532	2344	-32691
14	15	213669	15247513	-1573007	-3377	-32702
14	16	213669	15242242	-1573007	-3377	-32691
15	1	210848	-10013318	645027	1750	27300
15	2	210848	-10021259	645027	1750	27322
15	3	210846	-10013318	-1475991	-4011	27300
15	4	210846	-10021259	-1475991	-4011	27322
15	5	210848	-7920382	645027	1750	21576
15	6	210848	-7928323	645027	1750	21598
15	7	210846	-7920382	-1475991	-4011	21576
15	8	210846	-7928323	-1475991	-4011	21598
15	9	210848	7928323	645027	1750	-21598
15	10	210848	7920382	645027	1750	-21576
15	11	210846	7928323	-1475991	-4011	-21598
15	12	210846	7920382	-1475991	-4011	-21576
15	13	210848	10021259	645027	1750	-27322
15	14	210848	10013318	645027	1750	-27300
15	15	210846	10021259	-1475991	-4011	-27322
15	16	210846	10013318	-1475991	-4011	-27300

Caso 5
Descrizione: SLD con SISMAL PRINC

Punto maglia	sestetto	N (daN)	Mx (daNxm)	My (daNxm)	Tx (daN)	Ty (daN)
1	1	208436	-949163	4828493	17115	3340
1	2	208436	-1392907	4828493	17115	4916
1	3	208436	1373464	4828493	17115	-4850
1	4	208436	929721	4828493	17115	-3273
1	5	208436	-929721	4828493	17115	3273
1	6	208436	-1373464	4828493	17115	4850
1	7	208436	1392907	4828493	17115	-4916
1	8	208436	949163	4828493	17115	-3340
1	9	208445	-949163	-3678224	-13056	3340
1	10	208445	-1392907	-3678224	-13056	4916
1	11	208445	1373464	-3678224	-13056	-4850
1	12	208445	929721	-3678224	-13056	-3273
1	13	208445	-929721	-3678224	-13056	3273

1	14	208445	-1373464	-3678224	-13056	4850
1	15	208445	1392907	-3678224	-13056	-4916
1	16	208445	949163	-3678224	-13056	-3340
2	1	213683	-3648880	4042505	8659	7825
2	2	213683	-4259613	4042505	8659	9139
2	3	213683	4243334	4042505	8659	-9105
2	4	213683	3632601	4042505	8659	-7791
2	5	213683	-3632601	4042505	8659	7791
2	6	213683	-4243334	4042505	8659	9105
2	7	213683	4259613	4042505	8659	-9139
2	8	213683	3648880	4042505	8659	-7825
2	9	213661	-3648880	-3576088	-7662	7825
2	10	213661	-4259613	-3576088	-7662	9139
2	11	213661	4243334	-3576088	-7662	-9105
2	12	213661	3632601	-3576088	-7662	-7791
2	13	213661	-3632601	-3576088	-7662	7791
2	14	213661	-4243334	-3576088	-7662	9105
2	15	213661	4259613	-3576088	-7662	-9139
2	16	213661	3648880	-3576088	-7662	-7825
3	1	213689	-3822599	5573300	11971	8182
3	2	213689	-4353854	5573300	11971	9322
3	3	213689	4344474	5573300	11971	-9303
3	4	213689	3813219	5573300	11971	-8163
3	5	213689	-3813219	5573300	11971	8163
3	6	213689	-4344474	5573300	11971	9303
3	7	213689	4353854	5573300	11971	-9322
3	8	213689	3822599	5573300	11971	-8182
3	9	213658	-3822599	-5199916	-11175	8182
3	10	213658	-4353854	-5199916	-11175	9322
3	11	213658	4344474	-5199916	-11175	-9303
3	12	213658	3813219	-5199916	-11175	-8163
3	13	213658	-3813219	-5199916	-11175	8163
3	14	213658	-4344474	-5199916	-11175	9303
3	15	213658	4353854	-5199916	-11175	-9322
3	16	213658	3822599	-5199916	-11175	-8182
4	1	214542	-4616695	6319353	12737	9288
4	2	214542	-5068348	6319353	12737	10199
4	3	214542	5062860	6319353	12737	-10189
4	4	214542	4611206	6319353	12737	-9278
4	5	214542	-4611206	6319353	12737	9278
4	6	214542	-5062860	6319353	12737	10189
4	7	214542	5068348	6319353	12737	-10199
4	8	214542	4616695	6319353	12737	-9288
4	9	214499	-4616695	-6055303	-12207	9288
4	10	214499	-5068348	-6055303	-12207	10199
4	11	214499	5062860	-6055303	-12207	-10189
4	12	214499	4611206	-6055303	-12207	-9278
4	13	214499	-4611206	-6055303	-12207	9278
4	14	214499	-5062860	-6055303	-12207	10189
4	15	214499	5068348	-6055303	-12207	-10199
4	16	214499	4616695	-6055303	-12207	-9288
5	1	215681	-5544815	6533856	12216	10343
5	2	215681	-5903812	6533856	12216	11012
5	3	215681	5900524	6533856	12216	-11007
5	4	215681	5541527	6533856	12216	-10338
5	5	215681	-5541527	6533856	12216	10338

5	6	215681	-5900524	6533856	12216	11007
5	7	215681	5903812	6533856	12216	-11012
5	8	215681	5544815	6533856	12216	-10343
5	9	215625	-5544815	-6361929	-11898	10343
5	10	215625	-5903812	-6361929	-11898	11012
5	11	215625	5900524	-6361929	-11898	-11007
5	12	215625	5541527	-6361929	-11898	-10338
5	13	215625	-5541527	-6361929	-11898	10338
5	14	215625	-5900524	-6361929	-11898	11007
5	15	215625	5903812	-6361929	-11898	-11012
5	16	215625	5544815	-6361929	-11898	-10343
6	1	213272	-3609685	9264259	20523	7966
6	2	213272	-3824603	9264259	20523	8442
6	3	213272	3822720	9264259	20523	-8439
6	4	213272	3607802	9264259	20523	-7963
6	5	213272	-3607802	9264259	20523	7963
6	6	213272	-3822720	9264259	20523	8439
6	7	213272	3824603	9264259	20523	-8442
6	8	213272	3609685	9264259	20523	-7966
6	9	213224	-3609685	-9120482	-20206	7966
6	10	213224	-3824603	-9120482	-20206	8442
6	11	213224	3822720	-9120482	-20206	-8439
6	12	213224	3607802	-9120482	-20206	-7963
6	13	213224	-3607802	-9120482	-20206	7963
6	14	213224	-3822720	-9120482	-20206	8439
6	15	213224	3824603	-9120482	-20206	-8442
6	16	213224	3609685	-9120482	-20206	-7966
7	1	215512	-3961225	8518810	17029	7968
7	2	215512	-4076685	8518810	17029	8201
7	3	215512	4075484	8518810	17029	-8200
7	4	215512	3960024	8518810	17029	-7967
7	5	215512	-3960024	8518810	17029	7967
7	6	215512	-4075484	8518810	17029	8200
7	7	215512	4076685	8518810	17029	-8201
7	8	215512	3961225	8518810	17029	-7968
7	9	215452	-3961225	-8495573	-17298	7968
7	10	215452	-4076685	-8495573	-17298	8201
7	11	215452	4075484	-8495573	-17298	-8200
7	12	215452	3960024	-8495573	-17298	-7967
7	13	215452	-3960024	-8495573	-17298	7967
7	14	215452	-4075484	-8495573	-17298	8200
7	15	215452	4076685	-8495573	-17298	-8201
7	16	215452	3961225	-8495573	-17298	-7968
8	1	216755	-4691069	8450162	16712	9251
8	2	216755	-4696635	8450162	16712	9261
8	3	216755	4696089	8450162	16712	-9261
8	4	216755	4690524	8450162	16712	-9251
8	5	216755	-4690524	8450162	16712	9251
8	6	216755	-4696089	8450162	16712	9261
8	7	216755	4696635	8450162	16712	-9261
8	8	216755	4691069	8450162	16712	-9251
8	9	216692	-4691069	-8456056	-16724	9251
8	10	216692	-4696635	-8456056	-16724	9261
8	11	216692	4696089	-8456056	-16724	-9261
8	12	216692	4690524	-8456056	-16724	-9251
8	13	216692	-4690524	-8456056	-16724	9251

8	14	216692	-4696089	-8456056	-16724	9261
8	15	216692	4696635	-8456056	-16724	-9261
8	16	216692	4691069	-8456056	-16724	-9251
9	1	216221	-5268321	7954380	15429	10094
9	2	216221	-5157701	7954380	15429	9882
9	3	216221	5157892	7954380	15429	-9884
9	4	216221	5268512	7954380	15429	-10095
9	5	216221	-5268512	7954380	15429	10095
9	6	216221	-5157892	7954380	15429	9884
9	7	216221	5157701	7954380	15429	-9882
9	8	216221	5268321	7954380	15429	-10094
9	9	216156	-5268321	-7983478	-15187	10094
9	10	216156	-5157701	-7983478	-15187	9882
9	11	216156	5157892	-7983478	-15187	-9884
9	12	216156	5268512	-7983478	-15187	-10095
9	13	216156	-5268512	-7983478	-15187	10095
9	14	216156	-5157892	-7983478	-15187	9884
9	15	216156	5157701	-7983478	-15187	-9882
9	16	216156	5268321	-7983478	-15187	-10094
10	1	215258	-4873215	7471873	14363	9339
10	2	215258	-4651155	7471873	14363	8914
10	3	215258	4652048	7471873	14363	-8916
10	4	215258	4874108	7471873	14363	-9342
10	5	215258	-4874108	7471873	14363	9342
10	6	215258	-4652048	7471873	14363	8916
10	7	215258	4651155	7471873	14363	-8914
10	8	215258	4873215	7471873	14363	-9339
10	9	215197	-4873215	-7600002	-14608	9339
10	10	215197	-4651155	-7600002	-14608	8914
10	11	215197	4652048	-7600002	-14608	-8916
10	12	215197	4874108	-7600002	-14608	-9342
10	13	215197	-4874108	-7600002	-14608	9342
10	14	215197	-4652048	-7600002	-14608	8916
10	15	215197	4651155	-7600002	-14608	-8914
10	16	215197	4873215	-7600002	-14608	-9339
11	1	213271	-3840754	8298596	18376	8470
11	2	213271	-3532129	8298596	18376	7786
11	3	213271	3534082	8298596	18376	-7791
11	4	213271	3842707	8298596	18376	-8475
11	5	213271	-3842707	8298596	18376	8475
11	6	213271	-3534082	8298596	18376	7791
11	7	213271	3532129	8298596	18376	-7786
11	8	213271	3840754	8298596	18376	-8470
11	9	213228	-3840754	-8534758	-18899	8470
11	10	213228	-3532129	-8534758	-18899	7786
11	11	213228	3534082	-8534758	-18899	-7791
11	12	213228	3842707	-8534758	-18899	-8475
11	13	213228	-3842707	-8534758	-18899	8475
11	14	213228	-3534082	-8534758	-18899	7791
11	15	213228	3532129	-8534758	-18899	-7786
11	16	213228	3840754	-8534758	-18899	-8470
12	1	215676	-5775208	5501205	10288	10773
12	2	215676	-5311985	5501205	10288	9910
12	3	215676	5316702	5501205	10288	-9919
12	4	215676	5779924	5501205	10288	-10782
12	5	215676	-5779924	5501205	10288	10782

12	6	215676	-5316702	5501205	10288	9919
12	7	215676	5311985	5501205	10288	-9910
12	8	215676	5775208	5501205	10288	-10773
12	9	215627	-5775208	-5748879	-10748	10773
12	10	215627	-5311985	-5748879	-10748	9910
12	11	215627	5316702	-5748879	-10748	-9919
12	12	215627	5779924	-5748879	-10748	-10782
12	13	215627	-5779924	-5748879	-10748	10782
12	14	215627	-5316702	-5748879	-10748	9919
12	15	215627	5311985	-5748879	-10748	-9910
12	16	215627	5775208	-5748879	-10748	-10773
13	1	214540	-4955842	4869200	9806	9977
13	2	214540	-4404965	4869200	9806	8864
13	3	214540	4413787	4869200	9806	-8883
13	4	214540	4964663	4869200	9806	-9995
13	5	214540	-4964663	4869200	9806	9995
13	6	214540	-4413787	4869200	9806	8883
13	7	214540	4404965	4869200	9806	-8864
13	8	214540	4955842	4869200	9806	-9977
13	9	214504	-4955842	-5224973	-10522	9977
13	10	214504	-4404965	-5224973	-10522	8864
13	11	214504	4413787	-5224973	-10522	-8883
13	12	214504	4964663	-5224973	-10522	-9995
13	13	214504	-4964663	-5224973	-10522	9995
13	14	214504	-4413787	-5224973	-10522	8883
13	15	214504	4404965	-5224973	-10522	-8864
13	16	214504	4955842	-5224973	-10522	-9977
14	1	213684	-4062564	3707695	7969	8713
14	2	213684	-3451527	3707695	7969	7399
14	3	213684	3467165	3707695	7969	-7434
14	4	213684	4078201	3707695	7969	-8747
14	5	213684	-4078201	3707695	7969	8747
14	6	213684	-3467165	3707695	7969	7434
14	7	213684	3451527	3707695	7969	-7399
14	8	213684	4062564	3707695	7969	-8713
14	9	213662	-4062564	-4191169	-9002	8713
14	10	213662	-3451527	-4191169	-9002	7399
14	11	213662	3467165	-4191169	-9002	-7434
14	12	213662	4078201	-4191169	-9002	-8747
14	13	213662	-4078201	-4191169	-9002	8747
14	14	213662	-3467165	-4191169	-9002	7434
14	15	213662	3451527	-4191169	-9002	-7399
14	16	213662	4062564	-4191169	-9002	-8713
15	1	210850	-2662837	2730695	7415	7259
15	2	210850	-2104023	2730695	7415	5731
15	3	210850	2127581	2730695	7415	-5796
15	4	210850	2686395	2730695	7415	-7325
15	5	210850	-2686395	2730695	7415	7325
15	6	210850	-2127581	2730695	7415	5796
15	7	210850	2104023	2730695	7415	-5731
15	8	210850	2662837	2730695	7415	-7259
15	9	210845	-2662837	-3561658	-9676	7259
15	10	210845	-2104023	-3561658	-9676	5731
15	11	210845	2127581	-3561658	-9676	-5796
15	12	210845	2686395	-3561658	-9676	-7325
15	13	210845	-2686395	-3561658	-9676	7325

15	14	210845	-2127581	-3561658	-9676	5796
15	15	210845	2104023	-3561658	-9676	-5731
15	16	210845	2662837	-3561658	-9676	-7259

Caso 6

Descrizione: SLD con SISMAY PRINC

Punto maglia	sestetto	N (daN)	Mx (daNxcM)	My (daNxcM)	Tx (daN)	Ty (daN)
1	1	208439	-3134389	1851142	6555	11031
1	2	208439	-3128556	1851142	6555	11011
1	3	208442	-3134389	-700873	-2496	11031
1	4	208442	-3128556	-700873	-2496	11011
1	5	208439	-4613535	1851142	6555	16287
1	6	208439	-4607703	1851142	6555	16267
1	7	208442	-4613535	-700873	-2496	16287
1	8	208442	-4607703	-700873	-2496	16267
1	9	208439	4607703	1851142	6555	-16267
1	10	208439	4613535	1851142	6555	-16287
1	11	208442	4607703	-700873	-2496	-16267
1	12	208442	4613535	-700873	-2496	-16287
1	13	208439	3128556	1851142	6555	-11011
1	14	208439	3134389	1851142	6555	-11031
1	15	208442	3128556	-700873	-2496	-11011
1	16	208442	3134389	-700873	-2496	-11031
2	1	213675	-12138243	1375997	2947	26032
2	2	213675	-12133360	1375997	2947	26022
2	3	213669	-12138243	-909581	-1950	26032
2	4	213669	-12133360	-909581	-1950	26022
2	5	213675	-14174021	1375997	2947	30411
2	6	213675	-14169138	1375997	2947	30401
2	7	213669	-14174021	-909581	-1950	30411
2	8	213669	-14169138	-909581	-1950	30401
2	9	213675	14169138	1375997	2947	-30401
2	10	213675	14174021	1375997	2947	-30411
2	11	213669	14169138	-909581	-1950	-30401
2	12	213669	14174021	-909581	-1950	-30411
2	13	213675	12133360	1375997	2947	-26022
2	14	213675	12138243	1375997	2947	-26032
2	15	213669	12133360	-909581	-1950	-26022
2	16	213669	12138243	-909581	-1950	-26032
3	1	213678	-12727771	1802674	3870	27244
3	2	213678	-12724957	1802674	3870	27238
3	3	213669	-12727771	-1429291	-3074	27244
3	4	213669	-12724957	-1429291	-3074	27238
3	5	213678	-14498622	1802674	3870	31045
3	6	213678	-14495808	1802674	3870	31039
3	7	213669	-14498622	-1429291	-3074	31045
3	8	213669	-14495808	-1429291	-3074	31039
3	9	213678	14495808	1802674	3870	-31039
3	10	213678	14498622	1802674	3870	-31045
3	11	213669	14495808	-1429291	-3074	-31039
3	12	213669	14498622	-1429291	-3074	-31045
3	13	213678	12724957	1802674	3870	-27238
3	14	213678	12727771	1802674	3870	-27244
3	15	213669	12724957	-1429291	-3074	-27238
3	16	213669	12727771	-1429291	-3074	-27244
4	1	214527	-15380658	1988223	4007	30944

4	2	214527	-15379012	1988223	4007	30941
4	3	214514	-15380658	-1724174	-3476	30944
4	4	214514	-15379012	-1724174	-3476	30941
4	5	214527	-16886169	1988223	4007	33982
4	6	214527	-16884522	1988223	4007	33979
4	7	214514	-16886169	-1724174	-3476	33982
4	8	214514	-16884522	-1724174	-3476	33979
4	9	214527	16884522	1988223	4007	-33979
4	10	214527	16886169	1988223	4007	-33982
4	11	214514	16884522	-1724174	-3476	-33979
4	12	214514	16886169	-1724174	-3476	-33982
4	13	214527	15379012	1988223	4007	-30941
4	14	214527	15380658	1988223	4007	-30944
4	15	214514	15379012	-1724174	-3476	-30941
4	16	214514	15380658	-1724174	-3476	-30944
5	1	215661	-18477729	2020331	3776	34469
5	2	215661	-18476743	2020331	3776	34467
5	3	215644	-18477729	-1848404	-3458	34469
5	4	215644	-18476743	-1848404	-3458	34467
5	5	215661	-19674388	2020331	3776	36698
5	6	215661	-19673401	2020331	3776	36697
5	7	215644	-19674388	-1848404	-3458	36698
5	8	215644	-19673401	-1848404	-3458	36697
5	9	215661	19673401	2020331	3776	-36697
5	10	215661	19674388	2020331	3776	-36698
5	11	215644	19673401	-1848404	-3458	-36697
5	12	215644	19674388	-1848404	-3458	-36698
5	13	215661	18476743	2020331	3776	-34467
5	14	215661	18477729	2020331	3776	-34469
5	15	215644	18476743	-1848404	-3458	-34467
5	16	215644	18477729	-1848404	-3458	-34469
6	1	213255	-12029427	2829599	6268	26549
6	2	213255	-12028862	2829599	6268	26548
6	3	213241	-12029427	-2685823	-5951	26549
6	4	213241	-12028862	-2685823	-5951	26548
6	5	213255	-12745821	2829599	6268	28135
6	6	213255	-12745257	2829599	6268	28134
6	7	213241	-12745821	-2685823	-5951	28135
6	8	213241	-12745257	-2685823	-5951	28134
6	9	213255	12745257	2829599	6268	-28134
6	10	213255	12745821	2829599	6268	-28135
6	11	213241	12745257	-2685823	-5951	-28134
6	12	213241	12745821	-2685823	-5951	-28135
6	13	213255	12028862	2829599	6268	-26548
6	14	213255	12029427	2829599	6268	-26549
6	15	213241	12028862	-2685823	-5951	-26548
6	16	213241	12029427	-2685823	-5951	-26549
7	1	215491	-13202262	2563776	5014	26558
7	2	215491	-13201902	2563776	5014	26558
7	3	215473	-13202262	-2540539	-5284	26558
7	4	215473	-13201902	-2540539	-5284	26558
7	5	215491	-13587129	2563776	5014	27334
7	6	215491	-13586768	2563776	5014	27334
7	7	215473	-13587129	-2540539	-5284	27334
7	8	215473	-13586768	-2540539	-5284	27334
7	9	215491	13586768	2563776	5014	-27334

7	10	215491	13587129	2563776	5014	-27334
7	11	215473	13586768	-2540539	-5284	-27334
7	12	215473	13587129	-2540539	-5284	-27334
7	13	215491	13201902	2563776	5014	-26558
7	14	215491	13202262	2563776	5014	-26558
7	15	215473	13201902	-2540539	-5284	-26558
7	16	215473	13202262	-2540539	-5284	-26558
8	1	216733	-15636071	2532986	5010	30836
8	2	216733	-15635908	2532986	5010	30836
8	3	216714	-15636071	-2538880	-5021	30836
8	4	216714	-15635908	-2538880	-5021	30836
8	5	216733	-15654622	2532986	5010	30872
8	6	216733	-15654458	2532986	5010	30872
8	7	216714	-15654622	-2538880	-5021	30872
8	8	216714	-15654458	-2538880	-5021	30872
8	9	216733	15654458	2532986	5010	-30872
8	10	216733	15654622	2532986	5010	-30872
8	11	216714	15654458	-2538880	-5021	-30872
8	12	216714	15654622	-2538880	-5021	-30872
8	13	216733	15635908	2532986	5010	-30836
8	14	216733	15636071	2532986	5010	-30836
8	15	216714	15635908	-2538880	-5021	-30836
8	16	216714	15636071	-2538880	-5021	-30836
9	1	216198	-17561360	2376129	4713	33649
9	2	216198	-17561418	2376129	4713	33649
9	3	216179	-17561360	-2405228	-4472	33649
9	4	216179	-17561418	-2405228	-4472	33649
9	5	216198	-17192625	2376129	4713	32943
9	6	216198	-17192683	2376129	4713	32943
9	7	216179	-17192625	-2405228	-4472	32943
9	8	216179	-17192683	-2405228	-4472	32943
9	9	216198	17192683	2376129	4713	-32943
9	10	216198	17192625	2376129	4713	-32943
9	11	216179	17192683	-2405228	-4472	-32943
9	12	216179	17192625	-2405228	-4472	-32943
9	13	216198	17561418	2376129	4713	-33649
9	14	216198	17561360	2376129	4713	-33649
9	15	216179	17561418	-2405228	-4472	-33649
9	16	216179	17561360	-2405228	-4472	-33649
10	1	215237	-16245403	2196717	4223	31135
10	2	215237	-16245671	2196717	4223	31136
10	3	215219	-16245403	-2324845	-4468	31135
10	4	215219	-16245671	-2324845	-4468	31136
10	5	215237	-15505204	2196717	4223	29716
10	6	215237	-15505472	2196717	4223	29717
10	7	215219	-15505204	-2324845	-4468	29716
10	8	215219	-15505472	-2324845	-4468	29717
10	9	215237	15505472	2196717	4223	-29717
10	10	215237	15505204	2196717	4223	-29716
10	11	215219	15505472	-2324845	-4468	-29717
10	12	215219	15505204	-2324845	-4468	-29716
10	13	215237	16245671	2196717	4223	-31136
10	14	215237	16245403	2196717	4223	-31135
10	15	215219	16245671	-2324845	-4468	-31136
10	16	215219	16245403	-2324845	-4468	-31135
11	1	213256	-12805475	2406923	5330	28242

11	2	213256	-12806061	2406923	5330	28243
11	3	213243	-12805475	-2643084	-5853	28242
11	4	213243	-12806061	-2643084	-5853	28243
11	5	213256	-11776725	2406923	5330	25961
11	6	213256	-11777310	2406923	5330	25963
11	7	213243	-11776725	-2643084	-5853	25961
11	8	213243	-11777310	-2643084	-5853	25963
11	9	213256	11777310	2406923	5330	-25963
11	10	213256	11776725	2406923	5330	-25961
11	11	213243	11777310	-2643084	-5853	-25963
11	12	213243	11776725	-2643084	-5853	-25961
11	13	213256	12806061	2406923	5330	-28243
11	14	213256	12805475	2406923	5330	-28242
11	15	213243	12806061	-2643084	-5853	-28243
11	16	213243	12805475	-2643084	-5853	-28242
12	1	215659	-19257846	1563675	2925	35923
12	2	215659	-19259261	1563675	2925	35926
12	3	215645	-19257846	-1811350	-3386	35923
12	4	215645	-19259261	-1811350	-3386	35926
12	5	215659	-17713771	1563675	2925	33047
12	6	215659	-17715186	1563675	2925	33049
12	7	215645	-17713771	-1811350	-3386	33047
12	8	215645	-17715186	-1811350	-3386	33049
12	9	215659	17715186	1563675	2925	-33049
12	10	215659	17713771	1563675	2925	-33047
12	11	215645	17715186	-1811350	-3386	-33049
12	12	215645	17713771	-1811350	-3386	-33047
12	13	215659	19259261	1563675	2925	-35926
12	14	215659	19257846	1563675	2925	-35923
12	15	215645	19259261	-1811350	-3386	-35926
12	16	215645	19257846	-1811350	-3386	-35923
13	1	214527	-16532852	1336239	2691	33284
13	2	214527	-16535498	1336239	2691	33290
13	3	214517	-16532852	-1692013	-3407	33284
13	4	214517	-16535498	-1692013	-3407	33290
13	5	214527	-14696597	1336239	2691	29576
13	6	214527	-14699243	1336239	2691	29581
13	7	214517	-14696597	-1692013	-3407	29576
13	8	214517	-14699243	-1692013	-3407	29581
13	9	214527	14699243	1336239	2691	-29581
13	10	214527	14696597	1336239	2691	-29576
13	11	214517	14699243	-1692013	-3407	-29581
13	12	214517	14696597	-1692013	-3407	-29576
13	13	214527	16535498	1336239	2691	-33290
13	14	214527	16532852	1336239	2691	-33284
13	15	214517	16535498	-1692013	-3407	-33290
13	16	214517	16532852	-1692013	-3407	-33284
14	1	213676	-13565595	943092	2029	29095
14	2	213676	-13570287	943092	2029	29105
14	3	213670	-13565595	-1426567	-3062	29095
14	4	213670	-13570287	-1426567	-3062	29105
14	5	213676	-11528808	943092	2029	24716
14	6	213676	-11533499	943092	2029	24726
14	7	213670	-11528808	-1426567	-3062	24716
14	8	213670	-11533499	-1426567	-3062	24726
14	9	213676	11533499	943092	2029	-24726

14	10	213676	11528808	943092	2029	-24716
14	11	213670	11533499	-1426567	-3062	-24726
14	12	213670	11528808	-1426567	-3062	-24716
14	13	213676	13570287	943092	2029	-29105
14	14	213676	13565595	943092	2029	-29095
14	15	213670	13570287	-1426567	-3062	-29105
14	16	213670	13565595	-1426567	-3062	-29095
15	1	210848	-8911853	528371	1433	24297
15	2	210848	-8918920	528371	1433	24317
15	3	210846	-8911853	-1359335	-3694	24297
15	4	210846	-8918920	-1359335	-3694	24317
15	5	210848	-7049140	528371	1433	19202
15	6	210848	-7056208	528371	1433	19222
15	7	210846	-7049140	-1359335	-3694	19202
15	8	210846	-7056208	-1359335	-3694	19222
15	9	210848	7056208	528371	1433	-19222
15	10	210848	7049140	528371	1433	-19202
15	11	210846	7056208	-1359335	-3694	-19222
15	12	210846	7049140	-1359335	-3694	-19202
15	13	210848	8918920	528371	1433	-24317
15	14	210848	8911853	528371	1433	-24297
15	15	210846	8918920	-1359335	-3694	-24317
15	16	210846	8911853	-1359335	-3694	-24297

Caso 7

Descrizione: SLU FON con SISMAX PRINC

Punto maglia	sestetto	N (daN)	Mx (daNxcM)	My (daNxcM)	Tx (daN)	Ty (daN)
1	1	192564	-1173123	5783189	20502	4128
1	2	192564	-1721570	5783189	20502	6076
1	3	192564	1697540	5783189	20502	-5994
1	4	192564	1149093	5783189	20502	-4045
1	5	192564	-1149093	5783189	20502	4045
1	6	192564	-1697540	5783189	20502	5994
1	7	192564	1721570	5783189	20502	-6076
1	8	192564	1173123	5783189	20502	-4128
1	9	192575	-1173123	-4730731	-16788	4128
1	10	192575	-1721570	-4730731	-16788	6076
1	11	192575	1697540	-4730731	-16788	-5994
1	12	192575	1149093	-4730731	-16788	-4045
1	13	192575	-1149093	-4730731	-16788	4045
1	14	192575	-1697540	-4730731	-16788	5994
1	15	192575	1721570	-4730731	-16788	-6076
1	16	192575	1173123	-4730731	-16788	-4128
2	1	197814	-4509852	4921523	10542	9671
2	2	197814	-5264691	4921523	10542	11295
2	3	197814	5244570	4921523	10542	-11253
2	4	197814	4489731	4921523	10542	-9630
2	5	197814	-4489731	4921523	10542	9630
2	6	197814	-5244570	4921523	10542	11253
2	7	197814	5264691	4921523	10542	-11295
2	8	197814	4509852	4921523	10542	-9671
2	9	197787	-4509852	-4494716	-9630	9671
2	10	197787	-5264691	-4494716	-9630	11295
2	11	197787	5244570	-4494716	-9630	-11253
2	12	197787	4489731	-4494716	-9630	-9630
2	13	197787	-4489731	-4494716	-9630	9630

2	14	197787	-5244570	-4494716	-9630	11253
2	15	197787	5264691	-4494716	-9630	-11295
2	16	197787	4509852	-4494716	-9630	-9671
3	1	197821	-4724561	6828474	14668	10112
3	2	197821	-5381168	6828474	14668	11522
3	3	197821	5369575	6828474	14668	-11498
3	4	197821	4712968	6828474	14668	-10089
3	5	197821	-4712968	6828474	14668	10089
3	6	197821	-5369575	6828474	14668	11498
3	7	197821	5381168	6828474	14668	-11522
3	8	197821	4724561	6828474	14668	-10112
3	9	197783	-4724561	-6486737	-13940	10112
3	10	197783	-5381168	-6486737	-13940	11522
3	11	197783	5369575	-6486737	-13940	-11498
3	12	197783	4712968	-6486737	-13940	-10089
3	13	197783	-4712968	-6486737	-13940	10089
3	14	197783	-5369575	-6486737	-13940	11498
3	15	197783	5381168	-6486737	-13940	-11522
3	16	197783	4724561	-6486737	-13940	-10112
4	1	198676	-5706027	7768127	15658	11479
4	2	198676	-6264250	7768127	15658	12606
4	3	198676	6257467	7768127	15658	-12593
4	4	198676	5699244	7768127	15658	-11467
4	5	198676	-5699244	7768127	15658	11467
4	6	198676	-6257467	7768127	15658	12593
4	7	198676	6264250	7768127	15658	-12606
4	8	198676	5706027	7768127	15658	-11479
4	9	198622	-5706027	-7526393	-15172	11479
4	10	198622	-6264250	-7526393	-15172	12606
4	11	198622	6257467	-7526393	-15172	-12593
4	12	198622	5699244	-7526393	-15172	-11467
4	13	198622	-5699244	-7526393	-15172	11467
4	14	198622	-6257467	-7526393	-15172	12593
4	15	198622	6264250	-7526393	-15172	-12606
4	16	198622	5706027	-7526393	-15172	-11479
5	1	199816	-6853142	8048044	15048	12783
5	2	199816	-7296847	8048044	15048	13610
5	3	199816	7292783	8048044	15048	-13604
5	4	199816	6849078	8048044	15048	-12777
5	5	199816	-6849078	8048044	15048	12777
5	6	199816	-7292783	8048044	15048	13604
5	7	199816	7296847	8048044	15048	-13610
5	8	199816	6853142	8048044	15048	-12783
5	9	199747	-6853142	-7890567	-14756	12783
5	10	199747	-7296847	-7890567	-14756	13610
5	11	199747	7292783	-7890567	-14756	-13604
5	12	199747	6849078	-7890567	-14756	-12777
5	13	199747	-6849078	-7890567	-14756	12777
5	14	199747	-7292783	-7890567	-14756	13604
5	15	199747	7296847	-7890567	-14756	-13610
5	16	199747	6853142	-7890567	-14756	-12783
6	1	197406	-4461408	11427266	25315	9845
6	2	197406	-4727037	11427266	25315	10434
6	3	197406	4724711	11427266	25315	-10430
6	4	197406	4459081	11427266	25315	-9842
6	5	197406	-4459081	11427266	25315	9842

6	6	197406	-4724711	11427266	25315	10430
6	7	197406	4727037	11427266	25315	-10434
6	8	197406	4461408	11427266	25315	-9845
6	9	197347	-4461408	-11295446	-25024	9845
6	10	197347	-4727037	-11295446	-25024	10434
6	11	197347	4724711	-11295446	-25024	-10430
6	12	197347	4459081	-11295446	-25024	-9842
6	13	197347	-4459081	-11295446	-25024	9842
6	14	197347	-4724711	-11295446	-25024	10430
6	15	197347	4727037	-11295446	-25024	-10434
6	16	197347	4461408	-11295446	-25024	-9845
7	1	199648	-4895896	10523690	21074	9848
7	2	199648	-5038599	10523690	21074	10136
7	3	199648	5037115	10523690	21074	-10134
7	4	199648	4894412	10523690	21074	-9847
7	5	199648	-4894412	10523690	21074	9847
7	6	199648	-5037115	10523690	21074	10134
7	7	199648	5038599	10523690	21074	-10136
7	8	199648	4895896	10523690	21074	-9848
7	9	199573	-4895896	-10505321	-21353	9848
7	10	199573	-5038599	-10505321	-21353	10136
7	11	199573	5037115	-10505321	-21353	-10134
7	12	199573	4894412	-10505321	-21353	-9847
7	13	199573	-4894412	-10505321	-21353	9847
7	14	199573	-5037115	-10505321	-21353	10134
7	15	199573	5038599	-10505321	-21353	-10136
7	16	199573	4895896	-10505321	-21353	-9848
8	1	200891	-5797951	10444993	20658	11434
8	2	200891	-5804829	10444993	20658	11447
8	3	200891	5804156	10444993	20658	-11447
8	4	200891	5797277	10444993	20658	-11434
8	5	200891	-5797277	10444993	20658	11434
8	6	200891	-5804156	10444993	20658	11447
8	7	200891	5804829	10444993	20658	-11447
8	8	200891	5797951	10444993	20658	-11434
8	9	200813	-5797951	-10450333	-20668	11434
8	10	200813	-5804829	-10450333	-20668	11447
8	11	200813	5804156	-10450333	-20668	-11447
8	12	200813	5797277	-10450333	-20668	-11434
8	13	200813	-5797277	-10450333	-20668	11434
8	14	200813	-5804156	-10450333	-20668	11447
8	15	200813	5804829	-10450333	-20668	-11447
8	16	200813	5797951	-10450333	-20668	-11434
9	1	200357	-6511408	9837485	19047	12476
9	2	200357	-6374686	9837485	19047	12214
9	3	200357	6374922	9837485	19047	-12216
9	4	200357	6511644	9837485	19047	-12478
9	5	200357	-6511644	9837485	19047	12478
9	6	200357	-6374922	9837485	19047	12216
9	7	200357	6374686	9837485	19047	-12214
9	8	200357	6511408	9837485	19047	-12476
9	9	200277	-6511408	-9860991	-18794	12476
9	10	200277	-6374686	-9860991	-18794	12214
9	11	200277	6374922	-9860991	-18794	-12216
9	12	200277	6511644	-9860991	-18794	-12478
9	13	200277	-6511644	-9860991	-18794	12478

9	14	200277	-6374922	-9860991	-18794	12216
9	15	200277	6374686	-9860991	-18794	-12214
9	16	200277	6511408	-9860991	-18794	-12476
10	1	199394	-6023074	9255397	17791	11543
10	2	199394	-5748618	9255397	17791	11017
10	3	199394	5749722	9255397	17791	-11020
10	4	199394	6024178	9255397	17791	-11546
10	5	199394	-6024178	9255397	17791	11546
10	6	199394	-5749722	9255397	17791	11020
10	7	199394	5748618	9255397	17791	-11017
10	8	199394	6023074	9255397	17791	-11543
10	9	199319	-6023074	-9372763	-18015	11543
10	10	199319	-5748618	-9372763	-18015	11017
10	11	199319	5749722	-9372763	-18015	-11020
10	12	199319	6024178	-9372763	-18015	-11546
10	13	199319	-6024178	-9372763	-18015	11546
10	14	199319	-5749722	-9372763	-18015	11020
10	15	199319	5748618	-9372763	-18015	-11017
10	16	199319	6023074	-9372763	-18015	-11543
11	1	197405	-4746999	10294537	22796	10469
11	2	197405	-4365553	10294537	22796	9623
11	3	197405	4367966	10294537	22796	-9630
11	4	197405	4749413	10294537	22796	-10475
11	5	197405	-4749413	10294537	22796	10475
11	6	197405	-4367966	10294537	22796	9630
11	7	197405	4365553	10294537	22796	-9623
11	8	197405	4746999	10294537	22796	-10469
11	9	197351	-4746999	-10510732	-23275	10469
11	10	197351	-4365553	-10510732	-23275	9623
11	11	197351	4367966	-10510732	-23275	-9630
11	12	197351	4749413	-10510732	-23275	-10475
11	13	197351	-4749413	-10510732	-23275	10475
11	14	197351	-4367966	-10510732	-23275	9630
11	15	197351	4365553	-10510732	-23275	-9623
11	16	197351	4746999	-10510732	-23275	-10469
12	1	199811	-7137897	6838963	12789	13314
12	2	199811	-6565375	6838963	12789	12248
12	3	199811	6571205	6838963	12789	-12260
12	4	199811	7143727	6838963	12789	-13327
12	5	199811	-7143727	6838963	12789	13327
12	6	199811	-6571205	6838963	12789	12260
12	7	199811	6565375	6838963	12789	-12248
12	8	199811	7137897	6838963	12789	-13314
12	9	199750	-7137897	-7065635	-13211	13314
12	10	199750	-6565375	-7065635	-13211	12248
12	11	199750	6571205	-7065635	-13211	-12260
12	12	199750	7143727	-7065635	-13211	-13327
12	13	199750	-7143727	-7065635	-13211	13327
12	14	199750	-6571205	-7065635	-13211	12260
12	15	199750	6565375	-7065635	-13211	-12248
12	16	199750	7137897	-7065635	-13211	-13314
13	1	198673	-6125198	6075199	12234	12331
13	2	198673	-5444339	6075199	12234	10956
13	3	198673	5455242	6075199	12234	-10979
13	4	198673	6136101	6075199	12234	-12354
13	5	198673	-6136101	6075199	12234	12354

13	6	198673	-5455242	6075199	12234	10979
13	7	198673	5444339	6075199	12234	-10956
13	8	198673	6125198	6075199	12234	-12331
13	9	198629	-6125198	-6400745	-12890	12331
13	10	198629	-5444339	-6400745	-12890	10956
13	11	198629	5455242	-6400745	-12890	-10979
13	12	198629	6136101	-6400745	-12890	-12354
13	13	198629	-6136101	-6400745	-12890	12354
13	14	198629	-5455242	-6400745	-12890	10979
13	15	198629	5444339	-6400745	-12890	-10956
13	16	198629	6125198	-6400745	-12890	-12331
14	1	197816	-5021146	4660141	10015	10768
14	2	197816	-4265933	4660141	10015	9145
14	3	197816	4285260	4660141	10015	-9188
14	4	197816	5040473	4660141	10015	-10811
14	5	197816	-5040473	4660141	10015	10811
14	6	197816	-4285260	4660141	10015	9188
14	7	197816	4265933	4660141	10015	-9145
14	8	197816	5021146	4660141	10015	-10768
14	9	197787	-5021146	-5102499	-10960	10768
14	10	197787	-4265933	-5102499	-10960	9145
14	11	197787	4285260	-5102499	-10960	-9188
14	12	197787	5040473	-5102499	-10960	-10811
14	13	197787	-5040473	-5102499	-10960	10811
14	14	197787	-4285260	-5102499	-10960	9188
14	15	197787	4265933	-5102499	-10960	-9145
14	16	197787	5021146	-5102499	-10960	-10768
15	1	194979	-3291147	3508411	9528	8972
15	2	194979	-2600478	3508411	9528	7083
15	3	194979	2629595	3508411	9528	-7164
15	4	194979	3320264	3508411	9528	-9053
15	5	194979	-3320264	3508411	9528	9053
15	6	194979	-2629595	3508411	9528	7164
15	7	194979	2600478	3508411	9528	-7083
15	8	194979	3291147	3508411	9528	-8972
15	9	194972	-3291147	-4268655	-11596	8972
15	10	194972	-2600478	-4268655	-11596	7083
15	11	194972	2629595	-4268655	-11596	-7164
15	12	194972	3320264	-4268655	-11596	-9053
15	13	194972	-3320264	-4268655	-11596	9053
15	14	194972	-2629595	-4268655	-11596	7164
15	15	194972	2600478	-4268655	-11596	-7083
15	16	194972	3291147	-4268655	-11596	-8972

Caso 8

Descrizione: SLU FON con SISMA PRINC

Punto maglia	sestetto	N (daN)	Mx (daNxm)	My (daNxm)	Tx (daN)	Ty (daN)
1	1	192568	-3873964	2103317	7451	13634
1	2	192568	-3866755	2103317	7451	13609
1	3	192571	-3873964	-1050859	-3736	13634
1	4	192571	-3866755	-1050859	-3736	13609
1	5	192568	-5702122	2103317	7451	20129
1	6	192568	-5694913	2103317	7451	20105
1	7	192571	-5702122	-1050859	-3736	20129
1	8	192571	-5694913	-1050859	-3736	20105
1	9	192568	5694913	2103317	7451	-20105

1	10	192568	5702122	2103317	7451	-20129
1	11	192571	5694913	-1050859	-3736	-20105
1	12	192571	5702122	-1050859	-3736	-20129
1	13	192568	3866755	2103317	7451	-13609
1	14	192568	3873964	2103317	7451	-13634
1	15	192571	3866755	-1050859	-3736	-13609
1	16	192571	3873964	-1050859	-3736	-13634
2	1	197805	-15002323	1625839	3482	32175
2	2	197805	-14996287	1625839	3482	32162
2	3	197796	-15002323	-1199032	-2570	32175
2	4	197796	-14996287	-1199032	-2570	32162
2	5	197805	-17518453	1625839	3482	37586
2	6	197805	-17512417	1625839	3482	37574
2	7	197796	-17518453	-1199032	-2570	37586
2	8	197796	-17512417	-1199032	-2570	37574
2	9	197805	17512417	1625839	3482	-37574
2	10	197805	17518453	1625839	3482	-37586
2	11	197796	17512417	-1199032	-2570	-37574
2	12	197796	17518453	-1199032	-2570	-37586
2	13	197805	14996287	1625839	3482	-32162
2	14	197805	15002323	1625839	3482	-32175
2	15	197796	14996287	-1199032	-2570	-32162
2	16	197796	15002323	-1199032	-2570	-32175
3	1	197808	-15730953	2168150	4655	33672
3	2	197808	-15727475	2168150	4655	33665
3	3	197796	-15730953	-1826413	-3927	33672
3	4	197796	-15727475	-1826413	-3927	33665
3	5	197808	-17919645	2168150	4655	38370
3	6	197808	-17916167	2168150	4655	38363
3	7	197796	-17919645	-1826413	-3927	38370
3	8	197796	-17916167	-1826413	-3927	38363
3	9	197808	17916167	2168150	4655	-38363
3	10	197808	17919645	2168150	4655	-38370
3	11	197796	17916167	-1826413	-3927	-38363
3	12	197796	17919645	-1826413	-3927	-38370
3	13	197808	15727475	2168150	4655	-33665
3	14	197808	15730953	2168150	4655	-33672
3	15	197796	15727475	-1826413	-3927	-33665
3	16	197796	15730953	-1826413	-3927	-33672
4	1	198657	-19009802	2415045	4867	38246
4	2	198657	-19007767	2415045	4867	38242
4	3	198641	-19009802	-2173311	-4382	38246
4	4	198641	-19007767	-2173311	-4382	38242
4	5	198657	-20870545	2415045	4867	42001
4	6	198657	-20868511	2415045	4867	41997
4	7	198641	-20870545	-2173311	-4382	42001
4	8	198641	-20868511	-2173311	-4382	41997
4	9	198657	20868511	2415045	4867	-41997
4	10	198657	20870545	2415045	4867	-42001
4	11	198641	20868511	-2173311	-4382	-41997
4	12	198641	20870545	-2173311	-4382	-42001
4	13	198657	19007767	2415045	4867	-38242
4	14	198657	19009802	2415045	4867	-38246
4	15	198641	19007767	-2173311	-4382	-38242
4	16	198641	19009802	-2173311	-4382	-38246
5	1	199792	-22837643	2469530	4616	42602

5	2	199792	-22836424	2469530	4616	42600
5	3	199771	-22837643	-2312053	-4325	42602
5	4	199771	-22836424	-2312053	-4325	42600
5	5	199792	-24316659	2469530	4616	45357
5	6	199792	-24315440	2469530	4616	45355
5	7	199771	-24316659	-2312053	-4325	45357
5	8	199771	-24315440	-2312053	-4325	45355
5	9	199792	24315440	2469530	4616	-45355
5	10	199792	24316659	2469530	4616	-45357
5	11	199771	24315440	-2312053	-4325	-45355
5	12	199771	24316659	-2312053	-4325	-45357
5	13	199792	22836424	2469530	4616	-42600
5	14	199792	22837643	2469530	4616	-42602
5	15	199771	22836424	-2312053	-4325	-42600
5	16	199771	22837643	-2312053	-4325	-42602
6	1	197386	-14867831	3474317	7696	32813
6	2	197386	-14867133	3474317	7696	32812
6	3	197368	-14867831	-3342497	-7405	32813
6	4	197368	-14867133	-3342497	-7405	32812
6	5	197386	-15753262	3474317	7696	34773
6	6	197386	-15752564	3474317	7696	34772
6	7	197368	-15753262	-3342497	-7405	34773
6	8	197368	-15752564	-3342497	-7405	34772
6	9	197386	15752564	3474317	7696	-34772
6	10	197386	15753262	3474317	7696	-34773
6	11	197368	15752564	-3342497	-7405	-34772
6	12	197368	15753262	-3342497	-7405	-34773
6	13	197386	14867133	3474317	7696	-32812
6	14	197386	14867831	3474317	7696	-32813
6	15	197368	14867133	-3342497	-7405	-32812
6	16	197368	14867831	-3342497	-7405	-32813
7	1	199622	-16317403	3163536	6224	32825
7	2	199622	-16316958	3163536	6224	32824
7	3	199599	-16317403	-3145167	-6503	32825
7	4	199599	-16316958	-3145167	-6503	32824
7	5	199622	-16793080	3163536	6224	33784
7	6	199622	-16792635	3163536	6224	33783
7	7	199599	-16793080	-3145167	-6503	33784
7	8	199599	-16792635	-3145167	-6503	33783
7	9	199622	16792635	3163536	6224	-33783
7	10	199622	16793080	3163536	6224	-33784
7	11	199599	16792635	-3145167	-6503	-33783
7	12	199599	16793080	-3145167	-6503	-33784
7	13	199622	16316958	3163536	6224	-32824
7	14	199622	16317403	3163536	6224	-32825
7	15	199599	16316958	-3145167	-6503	-32824
7	16	199599	16317403	-3145167	-6503	-32825
8	1	200864	-19325482	3131629	6194	38112
8	2	200864	-19325279	3131629	6194	38112
8	3	200840	-19325482	-3136969	-6204	38112
8	4	200840	-19325279	-3136969	-6204	38112
8	5	200864	-19348409	3131629	6194	38156
8	6	200864	-19348207	3131629	6194	38156
8	7	200840	-19348409	-3136969	-6204	38156
8	8	200840	-19348207	-3136969	-6204	38156
8	9	200864	19348207	3131629	6194	-38156

8	10	200864	19348409	3131629	6194	-38156
8	11	200840	19348207	-3136969	-6204	-38156
8	12	200840	19348409	-3136969	-6204	-38156
8	13	200864	19325279	3131629	6194	-38112
8	14	200864	19325482	3131629	6194	-38112
8	15	200840	19325279	-3136969	-6204	-38112
8	16	200840	19325482	-3136969	-6204	-38112
9	1	200329	-21705052	2943018	5802	41589
9	2	200329	-21705123	2943018	5802	41589
9	3	200305	-21705052	-2966524	-5550	41589
9	4	200305	-21705123	-2966524	-5550	41589
9	5	200329	-21249312	2943018	5802	40716
9	6	200329	-21249383	2943018	5802	40716
9	7	200305	-21249312	-2966524	-5550	40716
9	8	200305	-21249383	-2966524	-5550	40716
9	9	200329	21249383	2943018	5802	-40716
9	10	200329	21249312	2943018	5802	-40716
9	11	200305	21249383	-2966524	-5550	-40716
9	12	200305	21249312	-2966524	-5550	-40716
9	13	200329	21705123	2943018	5802	-41589
9	14	200329	21705052	2943018	5802	-41589
9	15	200305	21705123	-2966524	-5550	-41589
9	16	200305	21705052	-2966524	-5550	-41589
10	1	199368	-20078588	2735541	5259	38481
10	2	199368	-20078919	2735541	5259	38482
10	3	199345	-20078588	-2852907	-5483	38481
10	4	199345	-20078919	-2852907	-5483	38482
10	5	199368	-19163735	2735541	5259	36728
10	6	199368	-19164066	2735541	5259	36729
10	7	199345	-19163735	-2852907	-5483	36728
10	8	199345	-19164066	-2852907	-5483	36729
10	9	199368	19164066	2735541	5259	-36729
10	10	199368	19163735	2735541	5259	-36728
10	11	199345	19164066	-2852907	-5483	-36729
10	12	199345	19163735	-2852907	-5483	-36728
10	13	199368	20078919	2735541	5259	-38482
10	14	199368	20078588	2735541	5259	-38481
10	15	199345	20078919	-2852907	-5483	-38482
10	16	199345	20078588	-2852907	-5483	-38481
11	1	197386	-15826992	3012692	6671	34905
11	2	197386	-15827716	3012692	6671	34908
11	3	197370	-15826992	-3228888	-7150	34905
11	4	197370	-15827716	-3228888	-7150	34908
11	5	197386	-14555502	3012692	6671	32087
11	6	197386	-14556226	3012692	6671	32089
11	7	197370	-14555502	-3228888	-7150	32087
11	8	197370	-14556226	-3228888	-7150	32089
11	9	197386	14556226	3012692	6671	-32089
11	10	197386	14555502	3012692	6671	-32087
11	11	197370	14556226	-3228888	-7150	-32089
11	12	197370	14555502	-3228888	-7150	-32087
11	13	197386	15827716	3012692	6671	-34908
11	14	197386	15826992	3012692	6671	-34905
11	15	197370	15827716	-3228888	-7150	-34908
11	16	197370	15826992	-3228888	-7150	-34905
12	1	199790	-23801832	1972354	3689	44400

12	2	199790	-23803581	1972354	3689	44403
12	3	199771	-23801832	-2199026	-4111	44400
12	4	199771	-23803581	-2199026	-4111	44403
12	5	199790	-21893425	1972354	3689	40844
12	6	199790	-21895174	1972354	3689	40848
12	7	199771	-21893425	-2199026	-4111	40844
12	8	199771	-21895174	-2199026	-4111	40848
12	9	199790	21895174	1972354	3689	-40848
12	10	199790	21893425	1972354	3689	-40844
12	11	199771	21895174	-2199026	-4111	-40848
12	12	199771	21893425	-2199026	-4111	-40844
12	13	199790	23803581	1972354	3689	-44403
12	14	199790	23801832	1972354	3689	-44400
12	15	199771	23803581	-2199026	-4111	-44403
12	16	199771	23801832	-2199026	-4111	-44400
13	1	198657	-20433862	1708619	3441	41137
13	2	198657	-20437133	1708619	3441	41144
13	3	198644	-20433862	-2034165	-4096	41137
13	4	198644	-20437133	-2034165	-4096	41144
13	5	198657	-18164333	1708619	3441	36554
13	6	198657	-18167604	1708619	3441	36561
13	7	198644	-18164333	-2034165	-4096	36554
13	8	198644	-18167604	-2034165	-4096	36561
13	9	198657	18167604	1708619	3441	-36561
13	10	198657	18164333	1708619	3441	-36554
13	11	198644	18167604	-2034165	-4096	-36561
13	12	198644	18164333	-2034165	-4096	-36554
13	13	198657	20437133	1708619	3441	-41144
13	14	198657	20433862	1708619	3441	-41137
13	15	198644	20437133	-2034165	-4096	-41144
13	16	198644	20433862	-2034165	-4096	-41137
14	1	197806	-16766466	1243217	2674	35960
14	2	197806	-16772264	1243217	2674	35973
14	3	197797	-16766466	-1685575	-3619	35960
14	4	197797	-16772264	-1685575	-3619	35973
14	5	197806	-14249089	1243217	2674	30547
14	6	197806	-14254887	1243217	2674	30560
14	7	197797	-14249089	-1685575	-3619	30547
14	8	197797	-14254887	-1685575	-3619	30560
14	9	197806	14254887	1243217	2674	-30560
14	10	197806	14249089	1243217	2674	-30547
14	11	197797	14254887	-1685575	-3619	-30560
14	12	197797	14249089	-1685575	-3619	-30547
14	13	197806	16772264	1243217	2674	-35973
14	14	197806	16766466	1243217	2674	-35960
14	15	197797	16772264	-1685575	-3619	-35973
14	16	197797	16766466	-1685575	-3619	-35960
15	1	194977	-11014650	786438	2134	30030
15	2	194977	-11023385	786438	2134	30055
15	3	194975	-11014650	-1546682	-4203	30030
15	4	194975	-11023385	-1546682	-4203	30055
15	5	194977	-8712420	786438	2134	23733
15	6	194977	-8721155	786438	2134	23758
15	7	194975	-8712420	-1546682	-4203	23733
15	8	194975	-8721155	-1546682	-4203	23758
15	9	194977	8721155	786438	2134	-23758

15	10	194977	8712420	786438	2134	-23733
15	11	194975	8721155	-1546682	-4203	-23758
15	12	194975	8712420	-1546682	-4203	-23733
15	13	194977	11023385	786438	2134	-30055
15	14	194977	11014650	786438	2134	-30030
15	15	194975	11023385	-1546682	-4203	-30055
15	16	194975	11014650	-1546682	-4203	-30030

Caso 9
Descrizione: SLUEqu

Punto maglia	sestetto	N (daN)	Mx (daNxcM)	My (daNxcM)	Tx (daN)	Ty (daN)
1	1	254994	0	719018	2538	0
2	1	260226	0	291700	624	0
3	1	260227	0	233703	498	0
4	1	261074	0	165492	333	0
5	1	262206	0	107998	200	0
6	1	259802	0	90771	201	0
7	1	262876	0	3785	-288	0
8	1	264957	0	-3590	-7	0
9	1	263582	0	-6859	266	0
10	1	261782	0	-80694	-154	0
11	1	259804	0	-148205	-328	0
12	1	262206	0	-155154	-288	0
13	1	261076	0	-222646	-448	0
14	1	260227	0	-302357	-646	0
15	1	257401	0	-519444	-1413	0

Caso 10
Descrizione: SLUEqu VENTYOY

Punto maglia	sestetto	N (daN)	Mx (daNxcM)	My (daNxcM)	Tx (daN)	Ty (daN)
1	1	254994	-4922035	718960	2538	17383
1	2	254994	4922035	719075	2538	-17383
2	1	260226	-7786194	291677	624	16658
2	2	260226	7786194	291723	624	-16658
3	1	260227	-8085326	233684	498	17271
3	2	260227	8085326	233721	498	-17271
4	1	261074	-8571457	165479	332	17211
4	2	261074	8571457	165505	333	-17211
5	1	262206	-8955281	107990	200	16658
5	2	262206	8955281	108007	200	-16658
6	1	259802	-7997609	90764	201	17637
6	2	259802	7997609	90777	201	-17637
7	1	262876	-8470486	3783	-288	17011
7	2	262876	8470486	3788	-288	-17011
8	1	264957	-8718171	-3589	-7	17162
8	2	264957	8718171	-3590	-7	-17162
9	1	263582	-8931595	-6855	266	17079
9	2	263582	8931595	-6862	266	-17079
10	1	261782	-8824441	-80687	-154	16880
10	2	261782	8824441	-80700	-154	-16880
11	1	259804	-8050380	-148193	-328	17749
11	2	259804	8050380	-148217	-328	-17749
12	1	262206	-8958275	-155141	-288	16665
12	2	262206	8958275	-155166	-288	-16665
13	1	261076	-8569130	-222628	-448	17206
13	2	261076	8569130	-222664	-448	-17206
14	1	260227	-7931160	-302332	-646	16955

14	2	260227	7931160	-302381	-646	-16955
15	1	257401	-6258633	-519402	-1413	17023
15	2	257401	6258633	-519485	-1413	-17023

Caso 11
Descrizione: Rara

Punto maglia	sestetto	N (daN)	Mx (daNxcM)	My (daNxcM)	Tx (daN)	Ty (daN)
1	1	208948	0	576823	2036	0
2	1	214180	0	233956	500	0
3	1	214181	0	187369	399	0
4	1	215028	0	132593	266	0
5	1	216160	0	86435	160	0
6	1	213756	0	72464	160	0
7	1	216230	0	7419	-182	0
8	1	217711	0	-2907	-6	0
9	1	216936	0	-10098	167	0
10	1	215735	0	-64478	-123	0
11	1	213757	0	-118641	-263	0
12	1	216159	0	-124320	-231	0
13	1	215030	0	-178492	-359	0
14	1	214181	0	-242486	-518	0
15	1	211355	0	-416683	-1134	0

Caso 12
Descrizione: Rara VentoY

Punto maglia	sestetto	N (daN)	Mx (daNxcM)	My (daNxcM)	Tx (daN)	Ty (daN)
1	1	208948	-3281357	576784	2036	11589
1	2	208948	3281357	576861	2036	-11589
2	1	214180	-5190796	233941	500	11105
2	2	214180	5190796	233972	500	-11105
3	1	214181	-5390218	187357	399	11514
3	2	214181	5390218	187381	399	-11514
4	1	215028	-5714305	132584	266	11474
4	2	215028	5714305	132601	266	-11474
5	1	216160	-5970188	86430	160	11105
5	2	216160	5970188	86441	160	-11105
6	1	213756	-5331739	72460	160	11758
6	2	213756	5331739	72469	160	-11758
7	1	216230	-5646991	7417	-182	11340
7	2	216230	5646991	7420	-182	-11340
8	1	217711	-5812114	-2907	-6	11441
8	2	217711	5812114	-2908	-6	-11441
9	1	216936	-5954397	-10096	167	11386
9	2	216936	5954397	-10100	167	-11386
10	1	215735	-5882961	-64474	-123	11254
10	2	215735	5882961	-64482	-123	-11254
11	1	213757	-5366920	-118633	-263	11832
11	2	213757	5366920	-118649	-263	-11832
12	1	216159	-5972183	-124311	-231	11110
12	2	216159	5972183	-124328	-231	-11110
13	1	215030	-5712753	-178481	-359	11471
13	2	215030	5712753	-178504	-359	-11471
14	1	214181	-5287440	-242469	-518	11304
14	2	214181	5287440	-242502	-518	-11304
15	1	211355	-4172422	-416655	-1134	11349
15	2	211355	4172422	-416710	-1134	-11349

Caso 13
Descrizione: Frequente

Punto maglia	sestetto	N (daN)	Mx (daNxcM)	My (daNxcM)	Tx (daN)	Ty (daN)
1	1	199236	0	546461	1929	0
2	1	204467	0	221435	473	0
3	1	204468	0	177087	377	0
4	1	205316	0	125026	251	0
5	1	206448	0	81171	150	0
6	1	204043	0	67460	149	0
7	1	205677	0	20901	-18	0
8	1	206319	0	-2908	-6	0
9	1	206384	0	-24279	9	0
10	1	206023	0	-60339	-115	0
11	1	204045	0	-111689	-247	0
12	1	206447	0	-117380	-218	0
13	1	205317	0	-168815	-340	0
14	1	204468	0	-229587	-490	0
15	1	201642	0	-394799	-1074	0

Caso 14
Descrizione: Quasi Perm

Punto maglia	sestetto	N (daN)	Mx (daNxcM)	My (daNxcM)	Tx (daN)	Ty (daN)
1	1	186571	0	507249	1790	0
2	1	191802	0	205460	439	0
3	1	191804	0	164204	350	0
4	1	192651	0	115806	233	0
5	1	193783	0	75045	139	0
6	1	191379	0	62112	137	0
7	1	192652	0	25376	50	0
8	1	192934	0	-2759	-5	0
9	1	193359	0	-28859	-56	0
10	1	193358	0	-55682	-106	0
11	1	191380	0	-103361	-229	0
12	1	193782	0	-108780	-202	0
13	1	192652	0	-156571	-315	0
14	1	191803	0	-213046	-455	0
15	1	188977	0	-366478	-997	0

Stabilità a ribaltamento

Punto maglia	caso-sestetto	M stab. (daNxcM)	M rib. (daNxcM)	FS plinto	caso-sestetto	M stab. (daNxcM)	M rib. (daNxcM)	FS plinto + magrone
1	10-2	59 926 659	7 007 985	8.55	10-2	63 628 592	7 181 814	8.86
2	10-2	60 305 799	9 785 174	6.16	10-2	64 026 689	9 951 756	6.43
3	10-2	60 209 113	10 157 899	5.93	10-2	63 925 169	10 330 613	6.19
4	10-2	61 422 120	10 636 827	5.77	10-2	65 198 826	10 808 941	6.03
5	10-2	63 072 270	10 954 248	5.76	10-2	66 931 484	11 120 829	6.02
6	10-2	59 263 092	10 114 107	5.86	10-2	62 931 847	10 290 482	6.12
7	10-2	61 491 668	10 511 753	5.85	10-2	65 271 852	10 681 859	6.11
8	10-1	62 191 168	10 777 558	5.77	10-1	66 006 327	10 949 173	6.03
9	10-1	62 389 466	10 981 030	5.68	10-1	66 214 539	11 151 816	5.94
10	10-1	61 932 396	10 850 074	5.71	10-1	65 734 616	11 018 876	5.97
11	10-1	62 580 360	10 180 223	6.15	10-1	66 414 977	10 357 710	6.41
12	10-1	62 393 623	10 958 070	5.69	10-1	66 218 904	11 124 720	5.95
13	10-1	60 550 109	10 633 823	5.69	10-1	64 283 215	10 805 881	5.95
14	10-1	62 944 469	9 965 814	6.32	10-1	66 797 292	10 135 368	6.59
15	10-1	62 282 425	8 301 372	7.50	10-1	66 102 146	8 471 600	7.80

Massime pressioni sul terreno

Punto maglia	Stratig.	caso-sestetto	Area ridotta (mq)	q massima (daN/cm ²)
1	1	2-2	3.13 × 3.79 = 11.9	3.0
2	3	8-5	2.35 × 3.03 = 7.1	3.4
3	3	8-5	2.31 × 2.97 = 6.9	3.5
4	3	8-5	1.98 × 2.94 = 5.8	4.1
5	3	8-10	1.69 × 2.94 = 5.0	4.8
6	3	8-5	2.49 × 2.82 = 7.0	3.4
7	3	8-12	2.49 × 2.88 = 7.2	3.5
8	3	8-7	2.17 × 2.87 = 6.2	3.8
9	3	8-2	1.94 × 2.89 = 5.6	4.3
10	3	8-4	2.10 × 2.90 = 6.1	3.9
11	2	8-4	2.60 × 2.87 = 7.5	3.4
12	3	8-4	1.73 × 2.97 = 5.1	4.7
13	3	8-4	2.01 × 2.98 = 6.0	3.9
14	2	8-4	2.52 × 3.03 = 7.6	3.3
15	1	2-2	3.16 × 3.74 = 11.8	3.1

Capacità portante e scorrimento

Punto maglia	Stratig.	caso-sestetto	Area eff. (mq)	Area reag. (mq)	q app (daN/cm ²)	q lim. dren. (daN/cm ²)	q lim. NON dren. (daN/cm ²)	FS	caso-sestetto	H app. (daN)	H lim. (daN)	FS
1	1	2-2	13.44	11.88	3.0	19.0	3.3	1.13	8-7	20473.2	79536.4	3.88
2	3	6-5	13.44	8.57	3.0	16.6	3.1	1.04	8-12	37674.0	61580.2	1.63
3	3	6-5	13.44	8.35	3.1	16.5	3.1	1.01	8-7	38570.8	61796.1	1.60
4	3	8-5	13.44	6.14	4.1	19.8	3.7	0.92	8-12	42228.5	59994.6	1.42
5	3	8-10	13.44	5.45	4.8	18.7	3.5	0.75	8-12	45563.0	58286.2	1.28
6	3	6-5	13.44	8.46	3.0	16.3	3.0	1.01	8-7	35553.1	65585.9	1.84
7	3	6-12	13.44	8.57	3.1	17.3	3.3	1.06	8-5	34352.5	66335.0	1.93
8	3	6-7	13.44	8.06	3.3	17.0	3.2	0.98	8-5	38655.3	63411.8	1.64
9	3	8-2	13.44	5.95	4.3	19.1	3.8	0.89	8-4	41957.9	60703.0	1.45
10	3	6-4	13.44	7.98	3.3	17.2	3.3	0.99	8-13	38839.8	62485.0	1.61
11	2	2-2	13.44	11.60	3.2	20.4	3.6	1.13	8-2	35539.2	69427.2	1.95
12	3	8-4	13.44	5.55	4.7	18.5	3.5	0.77	8-2	44556.5	57600.3	1.29
13	3	8-4	13.44	6.23	3.9	19.2	3.6	0.92	8-2	41288.0	58874.0	1.43
14	2	2-2	13.44	11.61	3.2	20.6	3.6	1.14	8-2	36071.8	65904.8	1.83
15	1	2-2	13.44	11.81	3.1	20.4	3.6	1.16	8-2	30130.2	71649.8	2.38

Cedimenti

Punto maglia	Area equivalente (cm ²)	Cedimento a breve termine (cm)	Cedimento a lungo termine: 30 anni (cm)
1	320.0 × 420.0	2.3	3.4
2	320.0 × 420.0	2.3	3.5
3	320.0 × 420.0	2.3	3.5
4	320.0 × 420.0	2.4	3.5
5	320.0 × 420.0	1.8	2.8
6	320.0 × 420.0	2.3	3.4
7	320.0 × 420.0	2.4	3.5
8	320.0 × 420.0	2.4	3.6
9	320.0 × 420.0	2.4	3.6
10	320.0 × 420.0	2.4	3.6
11	320.0 × 420.0	1.8	2.7
12	320.0 × 420.0	2.1	3.2
13	320.0 × 420.0	2.3	3.5
14	320.0 × 420.0	1.8	2.8
15	320.0 × 420.0	1.8	2.7

Tensioni sul magrone

Punto maglia	Vertice (x,y)	Pressione (daN/cm ²)	caso-sestetto
	2413 ; -200	-3.59	2 - 2
1	2713 ; -200	-3.97	2 - 2
1	2713 ; 200	-2.22	2 - 2
1	2413 ; 200	-1.83	2 - 2
2	4976 ; -200	0.00	8 - 5
2	5276 ; -200	0.00	8 - 5
2	5276 ; 200	-5.36	8 - 5
2	4976 ; 200	-4.51	8 - 5
3	7539 ; -200	0.00	8 - 5
3	7839 ; -200	0.00	8 - 5
3	7839 ; 200	-5.62	8 - 5
3	7539 ; 200	-4.46	8 - 5
4	10102 ; -200	0.00	8 - 5
4	10402 ; -200	0.00	8 - 5
4	10402 ; 200	-6.52	8 - 5
4	10102 ; 200	-5.09	8 - 5
5	12665 ; -200	0.00	8 - 5
5	12965 ; -200	0.00	8 - 5
5	12965 ; 200	-7.68	8 - 5
5	12665 ; 200	-6.03	8 - 5
6	15228 ; -200	0.00	8 - 5
6	15528 ; -200	-0.01	8 - 5
6	15528 ; 200	-5.45	8 - 5
6	15228 ; 200	-3.71	8 - 5
7	17791 ; -200	0.00	8 - 7
7	18091 ; -200	0.00	8 - 7
7	18091 ; 200	-4.00	8 - 7
7	17791 ; 200	-5.55	8 - 7
8	20354 ; -200	0.00	8 - 7
8	20654 ; -200	0.00	8 - 7
8	20654 ; 200	-4.51	8 - 7
8	20354 ; 200	-6.22	8 - 7
9	22917 ; -200	-5.12	8 - 13
9	23217 ; -200	-6.89	8 - 13
9	23217 ; 200	0.00	8 - 13
9	22917 ; 200	0.00	8 - 13
10	25480 ; -200	0.00	8 - 4
10	25780 ; -200	0.00	8 - 4
10	25780 ; 200	-4.73	8 - 4
10	25480 ; 200	-6.31	8 - 4
11	28043 ; -200	-5.45	8 - 15
11	28343 ; -200	-3.91	8 - 15
11	28343 ; 200	0.00	8 - 15
11	28043 ; 200	-0.16	8 - 15
12	30606 ; -200	0.00	8 - 4
12	30906 ; -200	0.00	8 - 4
12	30906 ; 200	-5.96	8 - 4
12	30606 ; 200	-7.41	8 - 4
13	33169 ; -200	0.00	8 - 4
13	33469 ; -200	0.00	8 - 4
13	33469 ; 200	-5.08	8 - 4
13	33169 ; 200	-6.28	8 - 4
14	35732 ; -200	0.00	8 - 4
14	36032 ; -200	0.00	8 - 4

14	36032 ; 200	-4.42	8 - 4
14	35732 ; 200	-5.23	8 - 4
15	38295 ; -200	-4.25	8 - 15
15	38595 ; -200	-3.56	8 - 15
15	38595 ; 200	0.00	8 - 15
15	38295 ; 200	-0.59	8 - 15

Tensioni sul terreno

Punto maglia	Vertice (x,y)	Pressione (daN/cm ²)	caso-sestetto	Tipo caso
1	2 403 ; -210	-3.22	2 - 2	SLU
1	2 723 ; -210	-3.55	2 - 2	SLU
1	2 723 ; 210	-2.02	2 - 2	SLU
1	2 403 ; 210	-1.69	2 - 2	SLU
2	4 966 ; -210	0.00	8 - 5	SLU
2	5 286 ; -210	0.00	8 - 5	SLU
2	5 286 ; 210	-4.65	8 - 5	SLU
2	4 966 ; 210	-3.96	8 - 5	SLU
3	7 529 ; -210	0.00	8 - 5	SLU
3	7 849 ; -210	0.00	8 - 5	SLU
3	7 849 ; 210	-4.86	8 - 5	SLU
3	7 529 ; 210	-3.91	8 - 5	SLU
4	10 092 ; -210	0.00	8 - 5	SLU
4	10 412 ; -210	0.00	8 - 5	SLU
4	10 412 ; 210	-5.58	8 - 5	SLU
4	10 092 ; 210	-4.42	8 - 5	SLU
5	12 655 ; -210	0.00	8 - 5	SLU
5	12 975 ; -210	0.00	8 - 5	SLU
5	12 975 ; 210	-6.48	8 - 5	SLU
5	12 655 ; 210	-5.16	8 - 5	SLU
6	15 218 ; -210	0.00	8 - 5	SLU
6	15 538 ; -210	-0.12	8 - 5	SLU
6	15 538 ; 210	-4.73	8 - 5	SLU
6	15 218 ; 210	-3.29	8 - 5	SLU
7	17 781 ; -210	-0.04	8 - 7	SLU
7	18 101 ; -210	0.00	8 - 7	SLU
7	18 101 ; 210	-3.54	8 - 7	SLU
7	17 781 ; 210	-4.81	8 - 7	SLU
8	20 344 ; -210	0.00	8 - 7	SLU
8	20 664 ; -210	0.00	8 - 7	SLU
8	20 664 ; 210	-3.96	8 - 7	SLU
8	20 344 ; 210	-5.35	8 - 7	SLU
9	22 907 ; -210	0.00	8 - 2	SLU
9	23 227 ; -210	0.00	8 - 2	SLU
9	23 227 ; 210	-5.87	8 - 2	SLU
9	22 907 ; 210	-4.44	8 - 2	SLU
10	25 470 ; -210	-5.42	8 - 15	SLU
10	25 790 ; -210	-4.14	8 - 15	SLU
10	25 790 ; 210	0.00	8 - 15	SLU
10	25 470 ; 210	0.00	8 - 15	SLU
11	28 033 ; -210	-4.74	8 - 15	SLU
11	28 353 ; -210	-3.47	8 - 15	SLU
11	28 353 ; 210	0.00	8 - 15	SLU
11	28 033 ; 210	-0.24	8 - 15	SLU
12	30 596 ; -210	0.00	8 - 4	SLU
12	30 916 ; -210	0.00	8 - 4	SLU
12	30 916 ; 210	-5.10	8 - 4	SLU

12	30 596 ; 210	-6.26	8 - 4	SLU
13	33 159 ; -210	0.00	8 - 4	SLU
13	33 479 ; -210	0.00	8 - 4	SLU
13	33 479 ; 210	-4.40	8 - 4	SLU
13	33 159 ; 210	-5.37	8 - 4	SLU
14	35 722 ; -210	0.00	8 - 4	SLU
14	36 042 ; -210	0.00	8 - 4	SLU
14	36 042 ; 210	-3.90	8 - 4	SLU
14	35 722 ; 210	-4.57	8 - 4	SLU
15	38 285 ; -210	-3.76	8 - 15	SLU
15	38 605 ; -210	-3.17	8 - 15	SLU
15	38 605 ; 210	0.00	8 - 15	SLU
15	38 285 ; 210	-0.58	8 - 15	SLU

Verifiche strutturali

Caratteristiche armatura

Dimensione plinti = 400 cm x 300 cm x 120 cm

Armatura Inferiore

Tipo di armatura: Ferri a un piego uniformemente distribuiti

Diametro ferri: 6φ20 + 6φ26

Armatura Superiore

Tipo di armatura: Ferri a un piego uniformemente distribuiti

Diametro ferri: 4φ16

Copriferro: 5 cm

Verifica Flessionale e Taglio Plinti

Analisi lungo X: sezioni parallele al piano y'-z'

Momenti

Punto maglia	caso-sestetto	Msd (daNxcM)	Mrd pos. (daNxcM)	Mrd neg. (daNxcM)	sez. (cm)	Af sup. (cmq)	Af inf. (cmq)	FS	X sez. (cm)
1-sx-tozzo	3-12	7112711	16527620	-2666081	400*120	8	50	2.3	-30.0
1-dx-tozzo	3-2	7688841	16527620	-2666081	400*120	8	50	2.1	30.0
2-sx-tozzo	2-1	6979720	16527620	-2666081	400*120	8	50	2.4	-30.0
2-dx-tozzo	2-2	7269190	16527620	-2666081	400*120	8	50	2.3	30.0
3-sx-tozzo	3-10	7724911	16527620	-2666081	400*120	8	50	2.1	-30.0
3-dx-tozzo	3-2	7890789	16527620	-2666081	400*120	8	50	2.1	30.0
4-sx-tozzo	3-10	8129287	16527620	-2666081	400*120	8	50	2.0	-30.0
4-dx-tozzo	3-3	8245809	16527620	-2666081	400*120	8	50	2.0	30.0
5-sx-tozzo	3-10	8260349	16527620	-2666081	400*120	8	50	2.0	-30.0
5-dx-tozzo	3-6	8335805	16527620	-2666081	400*120	8	50	2.0	30.0
6-sx-tozzo	7-10	9860812	16527620	-2666081	400*120	8	50	1.7	-30.0
6-dx-tozzo	7-6	9933355	16527620	-2666081	400*120	8	50	1.7	30.0
7-sx-tozzo	7-11	9398534	16527620	-2666081	400*120	8	50	1.8	-30.0
7-dx-tozzo	7-6	9394604	16527620	-2666081	400*120	8	50	1.8	30.0
8-sx-tozzo	7-10	9375179	16527620	-2666081	400*120	8	50	1.8	-30.0
8-dx-tozzo	7-5	9374601	16527620	-2666081	400*120	8	50	1.8	30.0
9-sx-tozzo	7-12	9071582	16527620	-2666081	400*120	8	50	1.8	-30.0
9-dx-tozzo	7-8	9075900	16527620	-2666081	400*120	8	50	1.8	30.0
10-sx-tozzo	3-9	8860348	16527620	-2666081	400*120	8	50	1.9	-30.0
10-dx-tozzo	3-5	8806544	16527620	-2666081	400*120	8	50	1.9	30.0
11-sx-tozzo	7-9	9426529	16527620	-2666081	400*120	8	50	1.8	-30.0
11-dx-tozzo	7-5	9327266	16527620	-2666081	400*120	8	50	1.8	30.0
12-sx-tozzo	3-9	7952230	16527620	-2666081	400*120	8	50	2.1	-30.0
12-dx-tozzo	3-8	7846930	16527620	-2666081	400*120	8	50	2.1	30.0
13-sx-tozzo	3-13	7704328	16527620	-2666081	400*120	8	50	2.1	-30.0
13-dx-tozzo	3-5	7549796	16527620	-2666081	400*120	8	50	2.2	30.0
14-sx-tozzo	2-2	7274484	16527620	-2666081	400*120	8	50	2.3	-30.0
14-dx-tozzo	3-5	6986293	16527620	-2666081	400*120	8	50	2.4	30.0

15-sx-tozzo	2-2	7308456	16527620	-2666081	400*120	8	50	2.3	-30.0
15-dx-tozzo	2-1	6764219	16527620	-2666081	400*120	8	50	2.4	30.0

Taglio

Punto maglia	caso-sestetto	vsd (daN)	vrd (daN)	sez. (cm)	Af sup. (cmq)	Af inf. (cmq)	FS	X sez. (cm)
1-sx	3-12	0	88 783	400*120	8	50	>100	-175.0
1-dx	3-2	0	88 783	400*120	8	50	>100	175.0
2-sx	2-1	0	88 783	400*120	8	50	>100	-175.0
2-dx	2-2	0	88 783	400*120	8	50	>100	175.0
3-sx	3-10	0	88 783	400*120	8	50	>100	-175.0
3-dx	3-2	0	88 783	400*120	8	50	>100	175.0
4-sx	3-10	0	88 783	400*120	8	50	>100	-175.0
4-dx	3-3	0	88 783	400*120	8	50	>100	175.0
5-sx	3-10	0	88 783	400*120	8	50	>100	-175.0
5-dx	3-6	0	88 783	400*120	8	50	>100	175.0
6-sx	7-10	0	88 783	400*120	8	50	>100	-175.0
6-dx	7-6	0	88 783	400*120	8	50	>100	175.0
7-sx	7-11	0	88 783	400*120	8	50	>100	-175.0
7-dx	7-6	0	88 783	400*120	8	50	>100	175.0
8-sx	7-10	0	88 783	400*120	8	50	>100	-175.0
8-dx	7-5	0	88 783	400*120	8	50	>100	175.0
9-sx	7-12	0	88 783	400*120	8	50	>100	-175.0
9-dx	7-8	0	88 783	400*120	8	50	>100	175.0
10-sx	3-9	0	88 783	400*120	8	50	>100	-175.0
10-dx	3-5	0	88 783	400*120	8	50	>100	175.0
11-sx	7-9	0	88 783	400*120	8	50	>100	-175.0
11-dx	7-5	0	88 783	400*120	8	50	>100	175.0
12-sx	3-9	0	88 783	400*120	8	50	>100	-175.0
12-dx	3-8	0	88 783	400*120	8	50	>100	175.0
13-sx	3-13	0	88 783	400*120	8	50	>100	-175.0
13-dx	3-5	0	88 783	400*120	8	50	>100	175.0
14-sx	2-2	0	88 783	400*120	8	50	>100	-175.0
14-dx	3-5	0	88 783	400*120	8	50	>100	175.0
15-sx	2-2	0	88 783	400*120	8	50	>100	-175.0
15-dx	2-1	0	88 783	400*120	8	50	>100	175.0

Analisi lungo Y: sezioni parallele al piano X'-Z'

Momenti

Punto maglia	caso-sestetto	Msd (daNxm)	Mrd pos. (daNxm)	Mrd neg. (daNxm)	sez. (cm)	Af sup. (cmq)	Af inf. (cmq)	FS	Y sez. (cm)
1-sx-tozzo	2-1	13199606	16527620	-2666081	300*120	8	50	1.3	-30.0
1-dx-tozzo	2-2	13199606	16527620	-2666081	300*120	8	50	1.3	30.0
2-sx-tozzo	8-5	16122175	16527620	-2666081	300*120	8	50	1.0	-30.0
2-dx-tozzo	8-10	16122175	16527620	-2666081	300*120	8	50	1.0	30.0
3-sx-tozzo	8-5	16399013	16527620	-2666081	300*120	8	50	1.0	-30.0
3-dx-tozzo	8-10	16399013	16527620	-2666081	300*120	8	50	1.0	30.0
4-sx-tozzo	8-5	18357089	16527620	-2666081	300*120	8	50	0.9	-30.0
4-dx-tozzo	8-10	18357089	16527620	-2666081	300*120	8	50	0.9	30.0
5-sx-tozzo	8-7	20882741	16527620	-2666081	300*120	8	50	0.8	-30.0
5-dx-tozzo	8-12	20882741	16527620	-2666081	300*120	8	50	0.8	30.0
6-sx-tozzo	8-5	15077874	16527620	-2666081	300*120	8	50	1.1	-30.0
6-dx-tozzo	8-10	15077874	16527620	-2666081	300*120	8	50	1.1	30.0
7-sx-tozzo	8-5	15529996	16527620	-2666081	300*120	8	50	1.1	-30.0
7-dx-tozzo	8-10	15529996	16527620	-2666081	300*120	8	50	1.1	30.0
8-sx-tozzo	8-5	17181950	16527620	-2666081	300*120	8	50	1.0	-30.0

8-dx-tozzo	8-10	17181950	16527620	-2666081	300*120	8	50	1.0	30.0
9-sx-tozzo	8-2	18838144	16527620	-2666081	300*120	8	50	0.9	-30.0
9-dx-tozzo	8-13	18838144	16527620	-2666081	300*120	8	50	0.9	30.0
10-sx-tozzo	8-2	17572763	16527620	-2666081	300*120	8	50	0.9	-30.0
10-dx-tozzo	8-13	17572763	16527620	-2666081	300*120	8	50	0.9	30.0
11-sx-tozzo	8-2	15014823	16527620	-2666081	300*120	8	50	1.1	-30.0
11-dx-tozzo	8-13	15014823	16527620	-2666081	300*120	8	50	1.1	30.0
12-sx-tozzo	8-2	20524969	16527620	-2666081	300*120	8	50	0.8	-30.0
12-dx-tozzo	8-13	20524969	16527620	-2666081	300*120	8	50	0.8	30.0
13-sx-tozzo	8-2	18109538	16527620	-2666081	300*120	8	50	0.9	-30.0
13-dx-tozzo	8-13	18109538	16527620	-2666081	300*120	8	50	0.9	30.0
14-sx-tozzo	8-2	15521903	16527620	-2666081	300*120	8	50	1.1	-30.0
14-dx-tozzo	8-13	15521903	16527620	-2666081	300*120	8	50	1.1	30.0
15-sx-tozzo	2-1	13814911	16527620	-2666081	300*120	8	50	1.2	-30.0
15-dx-tozzo	2-2	13814911	16527620	-2666081	300*120	8	50	1.2	30.0

Taglio

Punto maglia	caso-sestetto	vsd (daN)	vrd (daN)	Sez. (cm)	Af sup. (cmq)	Af inf. (cmq)	FS	Y sez. (cm)
1-sx	2-1	24 288	66 326	300*120	8	50	2.7	-175.0
1-dx	2-2	24 288	66 326	300*120	8	50	2.7	175.0
2-sx	8-5	32 935	66 326	300*120	8	50	2.0	-175.0
2-dx	8-10	32 935	66 326	300*120	8	50	2.0	175.0
3-sx	8-5	33 622	66 326	300*120	8	50	2.0	-175.0
3-dx	8-10	33 622	66 326	300*120	8	50	2.0	175.0
4-sx	8-5	38 539	66 326	300*120	8	50	1.7	-175.0
4-dx	8-10	38 539	66 326	300*120	8	50	1.7	175.0
5-sx	8-7	45 283	66 326	300*120	8	50	1.5	-175.0
5-dx	8-12	45 283	66 326	300*120	8	50	1.5	175.0
6-sx	8-5	30 440	66 326	300*120	8	50	2.2	-175.0
6-dx	8-10	30 440	66 326	300*120	8	50	2.2	175.0
7-sx	8-5	31 428	66 326	300*120	8	50	2.1	-175.0
7-dx	8-10	31 428	66 326	300*120	8	50	2.1	175.0
8-sx	8-5	35 428	66 326	300*120	8	50	1.9	-175.0
8-dx	8-10	35 428	66 326	300*120	8	50	1.9	175.0
9-sx	8-2	39 700	66 326	300*120	8	50	1.7	-175.0
9-dx	8-13	39 700	66 326	300*120	8	50	1.7	175.0
10-sx	8-2	36 456	66 326	300*120	8	50	1.8	-175.0
10-dx	8-13	36 456	66 326	300*120	8	50	1.8	175.0
11-sx	8-2	30 239	66 326	300*120	8	50	2.2	-175.0
11-dx	8-13	30 239	66 326	300*120	8	50	2.2	175.0
12-sx	8-2	44 344	66 326	300*120	8	50	1.5	-175.0
12-dx	8-13	44 344	66 326	300*120	8	50	1.5	175.0
13-sx	8-2	37 946	66 326	300*120	8	50	1.7	-175.0
13-dx	8-13	37 946	66 326	300*120	8	50	1.7	175.0
14-sx	8-2	31 423	66 326	300*120	8	50	2.1	-175.0
14-dx	8-13	31 423	66 326	300*120	8	50	2.1	175.0
15-sx	2-1	25 620	66 326	300*120	8	50	2.6	-175.0
15-dx	2-2	25 620	66 326	300*120	8	50	2.6	175.0

Verifica a Punzonamento

Punto maglia	caso-sestetto	l crit. (cm)	beta	Area crit. (cmq)	Perim crit. (cm)	Vpd (daN)	Vpu (daN)	FS
1	2 - 1	230.0	1.15	116 910	0	7 469	377 388	43.9
2	2 - 1	230.0	1.15	116 910	0	7 645	377 388	42.9

3	2 - 1	230.0	1.15	116 910	0	7 645	377 388	42.9
4	2 - 1	230.0	1.15	116 910	0	7 673	377 388	42.8
5	2 - 1	230.0	1.15	116 910	0	7 711	377 388	42.6
6	2 - 1	230.0	1.15	116 910	0	7 630	377 388	43.0
7	2 - 1	230.0	1.15	116 910	0	7 719	377 388	42.5
8	2 - 2	230.0	1.15	116 910	0	7 775	377 388	42.2
9	2 - 2	230.0	1.15	116 910	0	7 743	377 388	42.4
10	2 - 2	230.0	1.15	116 910	0	7 697	377 388	42.6
11	2 - 2	230.0	1.15	116 910	0	7 630	377 388	43.0
12	2 - 2	230.0	1.15	116 910	0	7 711	377 388	42.6
13	2 - 2	230.0	1.15	116 910	0	7 673	377 388	42.8
14	2 - 2	230.0	1.15	116 910	0	7 645	377 388	42.9
15	2 - 2	230.0	1.15	116 910	0	7 550	377 388	43.5