

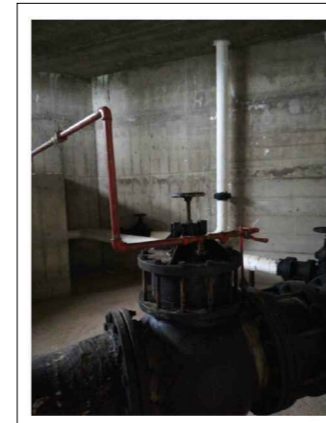
TORRE 1



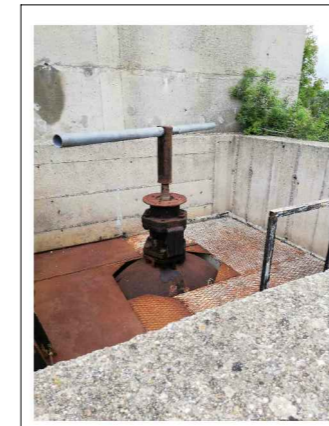
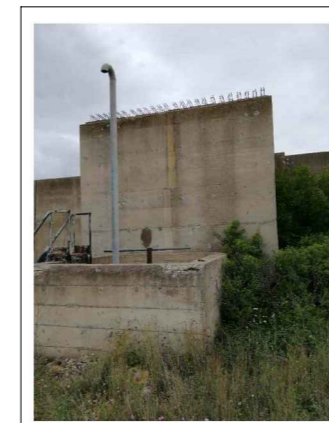
TORRE 2



TORRE 3



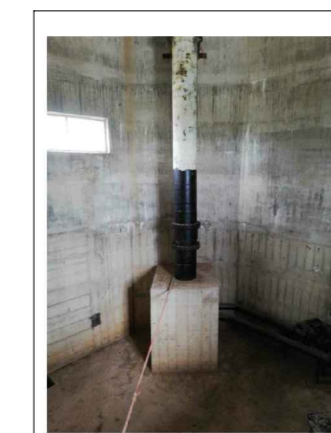
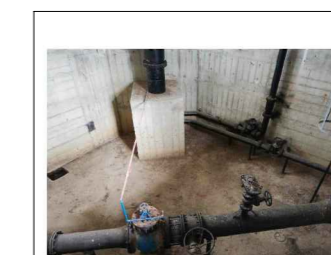
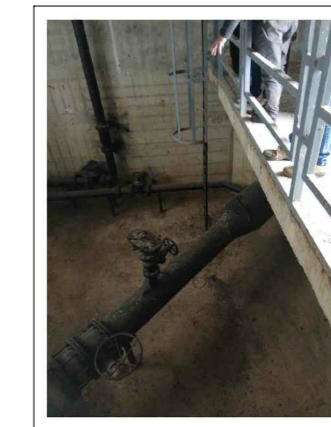
VASCA 10S



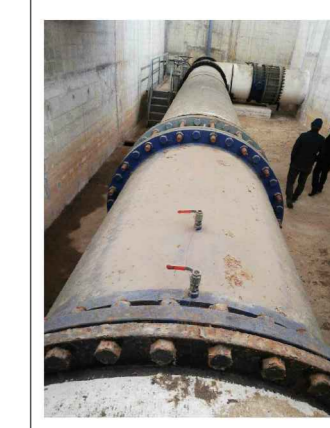
TORRE 1S-A4



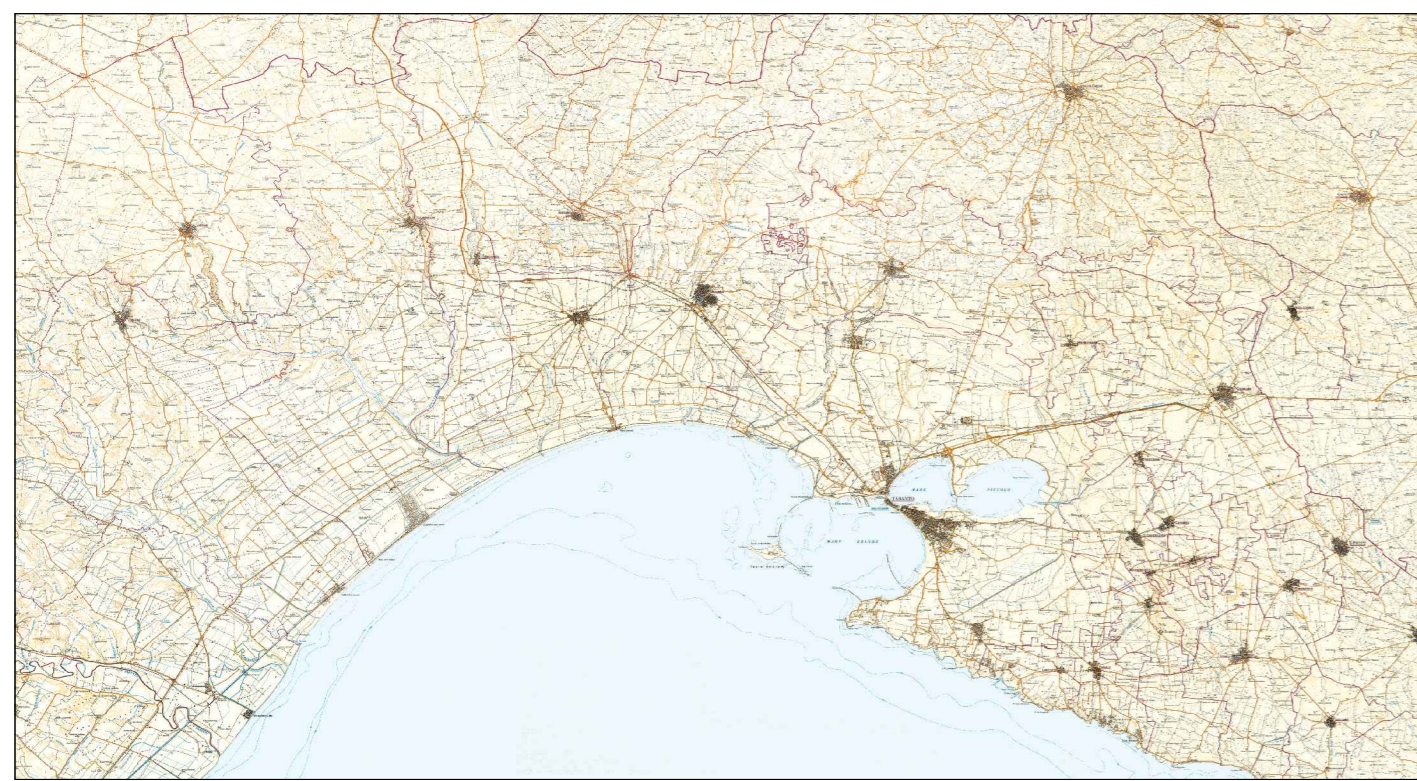
TORRE 4



VASCA 1



CONSORZIO DI BONIFICA STORNARA E TARA
TARANTO



PROGETTO: INTERVENTI DI MANUTENZIONE STRAORDINARIA URGENTI DI APPARECCHIATURE IDRAULICHE SUI NODI 10S3-10S8 E 10S9, TORRI DI DISCONNESSIONE T2-T3-T4, VASCA 1 E VASCA 10 PER LA FUNZIONALITA' E MESSA IN SICUREZZA DELL'IMPIANTO AREA SINNI".

LIVELLO PROGETTUALE:

- PERLIMINARE
- DEFINITIVO
- ESECUTIVO

DENOMINAZIONE:

- ORTOFOTO
- RILIEVO FOTOGRAFICO

A

TARANTO:

SCALA:

F9J" B&

VISTO IL DIRETTORE GENERALE:
DOTT. ANGELO D'ANDRIA

IL R.U.P.
E
PROGETTISTA
DOTT. ING. MARIO TARDUGNO

